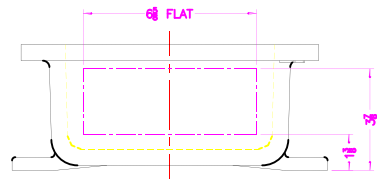


**XCE 0812 COVER**

- COVER DRILLING ALLOWABLE IN XCE ONLY
- NOTES:
1. MINIMUM SPACING FROM CENTER OF OPERATOR TO NEAREST FLAT IS  $1\frac{1}{8}$ .
  2. MINIMUM SPACING BETWEEN  $\frac{3}{4}$ -14 NPSM OPERATOR CENTERS IS  $2\frac{1}{2}$  FOR THIS ENCLOSURE.
  3. MAXIMUM NUMBER OF OPERATORS IS 8.
  4. DIMENSION FROM CENTER LINES OF COVER FOR OPERATORS.
  5. DIMENSION FROM CENTER LINE AND BACK OF MTC. LUG FOR CONDUIT.
  6. FOR MTC. ENCLOSURE USE  $3/8$  BOLT.



DO NOT SCALE DIMENSIONS UNLESS OTHERWISE SPECIFIED DIMENSIONS ARE IN INCHES UNLESS OTHERWISE SPECIFIED DIMENSIONS ARE IN MILLIMETERS DIMENSIONS ARE IN MILLIMETERS DIMENSIONS ARE IN MILLIMETERS DIMENSIONS ARE IN MILLIMETERS	<p><b>ADALET</b> A SCOTT PETERSON COMPANY Enclosure Systems Cable Accessories</p> <p>DATE OF REVISION: 06-13-01 DRAWN BY: DDH DATE: 6-13-01 CHECKED BY: DDH DATE: 6-13-01 APPROVED BY: DDH DATE: 6-13-01</p> <p>PROJECT: XCE/XIF 081204 DRAWING NO: XCE/XIF 081204</p>	<p>TITLE: MODIFIED XCE/XIF 081204 ENCLOSURE FOR</p> <p>DATE: 6-13-01 SCALE: 1=2.5 SHEET: D NO. OF SHEETS: 10F1</p>
---	--	--