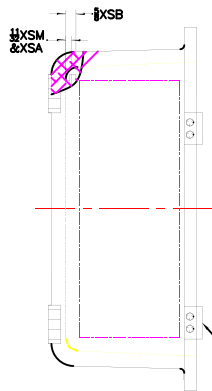
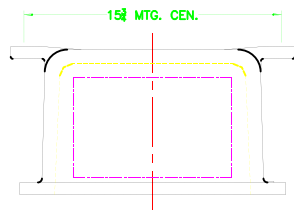
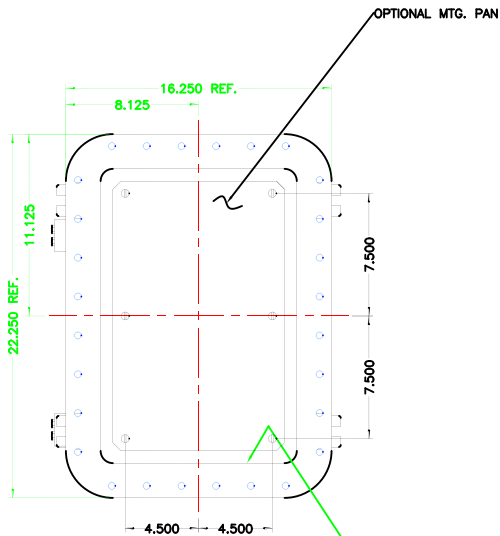


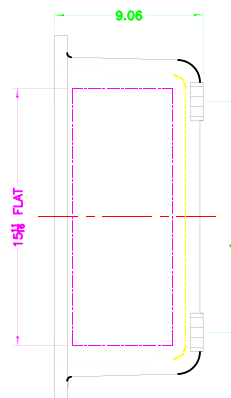
REV	REVISION	BY	CHK	DATE
-----	----------	----	-----	------



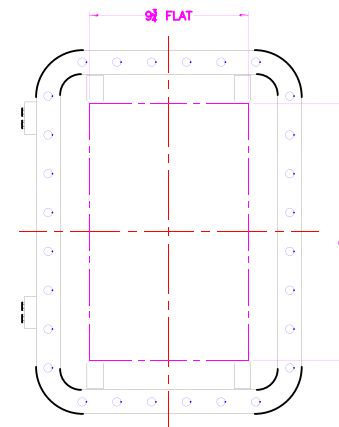
OPTIONAL XHC-2 HINGES



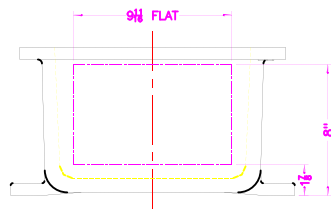
OPTIONAL MTG. PAN



EXISTING GRD. SCREW



XCE 1218 COVER



NOTES:

- COVER DRILLING ALLOWABLE IN XCE ONLY
1. MINIMUM SPACING FROM CENTER OF OPERATOR TO NEAREST FLAT IS 1 1/8."
 2. MINIMUM SPACING BETWEEN 3/4-14 NPSM OPERATOR CENTERS IS 3" FOR THIS ENCLOSURE.
 3. MAXIMUM NUMBER OF OPERATORS IS 15.
 4. DIMENSION FROM CENTER LINES OF COVER FOR OPERATORS.
 5. DIMENSION FROM CENTER LINE AND BACK OF MTG. LUG FOR CONDUIT.
 6. FOR MTG. ENCLOSURE USE 1/2 BOLT.

DO NOT SCALE DIMENSIONS UNLESS OTHERWISE SPECIFIED DIMENSIONS ARE IN INCHES DIMENSIONS IN PARENTHESES ARE DIMENSIONS IN MILLIMETERS DIMENSIONS IN BRACKETED ARE DIMENSIONS IN MILLIMETERS DIMENSIONS IN SQUARE BRACKETS ARE DIMENSIONS IN MILLIMETERS DIMENSIONS IN ROUNDED BRACKETS ARE DIMENSIONS IN MILLIMETERS DIMENSIONS IN DIAMETERS ARE DIMENSIONS IN MILLIMETERS DIMENSIONS IN SQUARE MILLIMETERS ARE DIMENSIONS IN MILLIMETERS DIMENSIONS IN SQUARE MILLIMETERS ARE DIMENSIONS IN MILLIMETERS DIMENSIONS IN SQUARE MILLIMETERS ARE DIMENSIONS IN MILLIMETERS	ADALET A SCOTT FITZGER COMPANY Industrial Equipment Cable Assemblies 1111 N. 12th St. Phoenix, AZ 85029 602-265-1000 FAX 602-265-1001 E-MAIL: info@adalet.com WWW: www.adalet.com	TITLE MODIFIED XCE/XIF 121808 ENCLOSURE FOR DRAWN BY DDH DATE 11-12-01 DESIGNED BY DDH DATE 11-12-01 CHECKED BY DDH DATE 11-12-01 APPROVED BY DDH DATE 11-12-01 FINISH TUMBLAST CMT NO XCE/XIF 121808 DRG NO 10F1
---	--	---