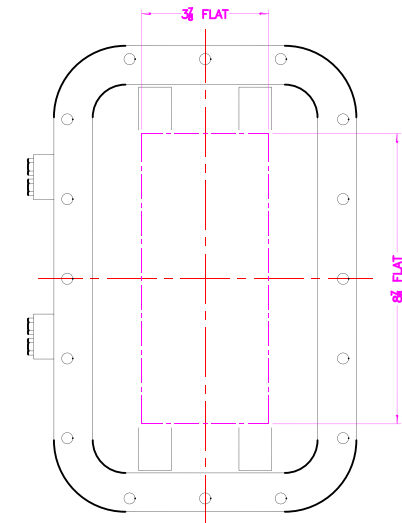
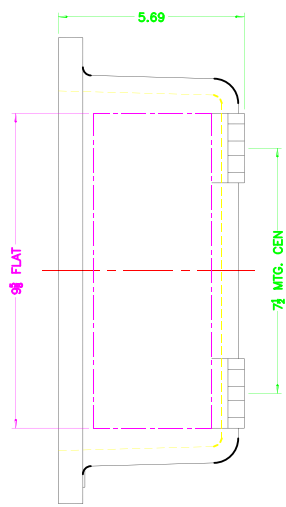


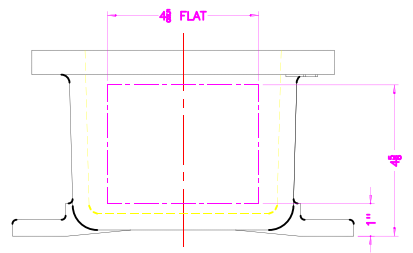
OPTIONAL XSM PAN



XCE 0611 COVER

OPTIONAL XHB-2 HINGES

EXISTING GRD. SCREW



NOTES:

COVER DRILLING ALLOWABLE IN XCE ONLY

1. MINIMUM SPACING FROM CENTER OF OPERATOR TO NEAREST FLAT IS 1 1/8.
2. MINIMUM SPACING BETWEEN 3/4-14 NPSM OPERATOR CENTERS IS 2 1/2 FOR THIS ENCLOSURE.
3. MAXIMUM NUMBER OF OPERATORS IS 3.
4. DIMENSION FROM CENTER LINES OF COVER FOR OPERATORS.
5. DIMENSION FROM CENTER LINE AND BACK OF MTG. LUG FOR CONDUIT.
6. FOR MTG. ENCLOSURE USE 3/8 BOLT.

<small>DO NOT SCALE DRAWING</small> <small>UNLESS OTHERWISE SPECIFIED</small> <small>CONFORM TO THE LATEST EDITIONS</small> <small>OF THE FOLLOWING STANDARDS:</small> <small>ASME Y14.5</small> <small>ANSI Z39.1</small> <small>IEEE 315</small> <small>IEEE 605</small> <small>IEEE 696</small> <small>IEEE 706</small> <small>IEEE 708</small> <small>IEEE 710</small> <small>IEEE 713</small> <small>IEEE 715</small> <small>IEEE 717</small> <small>IEEE 720</small> <small>IEEE 726</small> <small>IEEE 731</small> <small>IEEE 734</small> <small>IEEE 735</small> <small>IEEE 736</small> <small>IEEE 737</small> <small>IEEE 738</small> <small>IEEE 739</small> <small>IEEE 740</small> <small>IEEE 741</small> <small>IEEE 742</small> <small>IEEE 743</small> <small>IEEE 744</small> <small>IEEE 745</small> <small>IEEE 746</small> <small>IEEE 747</small> <small>IEEE 748</small> <small>IEEE 749</small> <small>IEEE 750</small> <small>IEEE 751</small> <small>IEEE 752</small> <small>IEEE 753</small> <small>IEEE 754</small> <small>IEEE 755</small> <small>IEEE 756</small> <small>IEEE 757</small> <small>IEEE 758</small> <small>IEEE 759</small> <small>IEEE 760</small> <small>IEEE 761</small> <small>IEEE 762</small> <small>IEEE 763</small> <small>IEEE 764</small> <small>IEEE 765</small> <small>IEEE 766</small> <small>IEEE 767</small> <small>IEEE 768</small> <small>IEEE 769</small> <small>IEEE 770</small> <small>IEEE 771</small> <small>IEEE 772</small> <small>IEEE 773</small> <small>IEEE 774</small> <small>IEEE 775</small> <small>IEEE 776</small> <small>IEEE 777</small> <small>IEEE 778</small> <small>IEEE 779</small> <small>IEEE 780</small> <small>IEEE 781</small> <small>IEEE 782</small> <small>IEEE 783</small> <small>IEEE 784</small> <small>IEEE 785</small> <small>IEEE 786</small> <small>IEEE 787</small> <small>IEEE 788</small> <small>IEEE 789</small> <small>IEEE 790</small> <small>IEEE 791</small> <small>IEEE 792</small> <small>IEEE 793</small> <small>IEEE 794</small> <small>IEEE 795</small> <small>IEEE 796</small> <small>IEEE 797</small> <small>IEEE 798</small> <small>IEEE 799</small> <small>IEEE 800</small> <small>IEEE 801</small> <small>IEEE 802</small> <small>IEEE 803</small> <small>IEEE 804</small> <small>IEEE 805</small> <small>IEEE 806</small> <small>IEEE 807</small> <small>IEEE 808</small> <small>IEEE 809</small> <small>IEEE 810</small> <small>IEEE 811</small> <small>IEEE 812</small> <small>IEEE 813</small> <small>IEEE 814</small> <small>IEEE 815</small> <small>IEEE 816</small> <small>IEEE 817</small> <small>IEEE 818</small> <small>IEEE 819</small> <small>IEEE 820</small> <small>IEEE 821</small> <small>IEEE 822</small> <small>IEEE 823</small> <small>IEEE 824</small> <small>IEEE 825</small> <small>IEEE 826</small> <small>IEEE 827</small> <small>IEEE 828</small> <small>IEEE 829</small> <small>IEEE 830</small> <small>IEEE 831</small> <small>IEEE 832</small> <small>IEEE 833</small> <small>IEEE 834</small> <small>IEEE 835</small> <small>IEEE 836</small> <small>IEEE 837</small> <small>IEEE 838</small> <small>IEEE 839</small> <small>IEEE 840</small> <small>IEEE 841</small> <small>IEEE 842</small> <small>IEEE 843</small> <small>IEEE 844</small> <small>IEEE 845</small> <small>IEEE 846</small> <small>IEEE 847</small> <small>IEEE 848</small> <small>IEEE 849</small> <small>IEEE 850</small> <small>IEEE 851</small> <small>IEEE 852</small> <small>IEEE 853</small> <small>IEEE 854</small> <small>IEEE 855</small> <small>IEEE 856</small> <small>IEEE 857</small> <small>IEEE 858</small> <small>IEEE 859</small> <small>IEEE 860</small> <small>IEEE 861</small> <small>IEEE 862</small> <small>IEEE 863</small> <small>IEEE 864</small> <small>IEEE 865</small> <small>IEEE 866</small> <small>IEEE 867</small> <small>IEEE 868</small> <small>IEEE 869</small> <small>IEEE 870</small> <small>IEEE 871</small> <small>IEEE 872</small> <small>IEEE 873</small> <small>IEEE 874</small> <small>IEEE 875</small> <small>IEEE 876</small> <small>IEEE 877</small> <small>IEEE 878</small> <small>IEEE 879</small> <small>IEEE 880</small> <small>IEEE 881</small> <small>IEEE 882</small> <small>IEEE 883</small> <small>IEEE 884</small> <small>IEEE 885</small> <small>IEEE 886</small> <small>IEEE 887</small> <small>IEEE 888</small> <small>IEEE 889</small> <small>IEEE 890</small> <small>IEEE 891</small> <small>IEEE 892</small> <small>IEEE 893</small> <small>IEEE 894</small> <small>IEEE 895</small> <small>IEEE 896</small> <small>IEEE 897</small> <small>IEEE 898</small> <small>IEEE 899</small> <small>IEEE 900</small> <small>IEEE 901</small> <small>IEEE 902</small> <small>IEEE 903</small> <small>IEEE 904</small> <small>IEEE 905</small> <small>IEEE 906</small> <small>IEEE 907</small> <small>IEEE 908</small> <small>IEEE 909</small> <small>IEEE 910</small> <small>IEEE 911</small> <small>IEEE 912</small> <small>IEEE 913</small> <small>IEEE 914</small> <small>IEEE 915</small> <small>IEEE 916</small> <small>IEEE 917</small> <small>IEEE 918</small> <small>IEEE 919</small> <small>IEEE 920</small> <small>IEEE 921</small> <small>IEEE 922</small> <small>IEEE 923</small> <small>IEEE 924</small> <small>IEEE 925</small> <small>IEEE 926</small> <small>IEEE 927</small> <small>IEEE 928</small> <small>IEEE 929</small> <small>IEEE 930</small> <small>IEEE 931</small> <small>IEEE 932</small> <small>IEEE 933</small> <small>IEEE 934</small> <small>IEEE 935</small> <small>IEEE 936</small> <small>IEEE 937</small> <small>IEEE 938</small> <small>IEEE 939</small> <small>IEEE 940</small> <small>IEEE 941</small> <small>IEEE 942</small> <small>IEEE 943</small> <small>IEEE 944</small> <small>IEEE 945</small> <small>IEEE 946</small> <small>IEEE 947</small> <small>IEEE 948</small> <small>IEEE 949</small> <small>IEEE 950</small> <small>IEEE 951</small> <small>IEEE 952</small> <small>IEEE 953</small> <small>IEEE 954</small> <small>IEEE 955</small> <small>IEEE 956</small> <small>IEEE 957</small> <small>IEEE 958</small> <small>IEEE 959</small> <small>IEEE 960</small> <small>IEEE 961</small> <small>IEEE 962</small> <small>IEEE 963</small> <small>IEEE 964</small> <small>IEEE 965</small> <small>IEEE 966</small> <small>IEEE 967</small> <small>IEEE 968</small> <small>IEEE 969</small> <small>IEEE 970</small> <small>IEEE 971</small> <small>IEEE 972</small> <small>IEEE 973</small> <small>IEEE 974</small> <small>IEEE 975</small> <small>IEEE 976</small> <small>IEEE 977</small> <small>IEEE 978</small> <small>IEEE 979</small> <small>IEEE 980</small> <small>IEEE 981</small> <small>IEEE 982</small> <small>IEEE 983</small> <small>IEEE 984</small> <small>IEEE 985</small> <small>IEEE 986</small> <small>IEEE 987</small> <small>IEEE 988</small> <small>IEEE 989</small> <small>IEEE 990</small> <small>IEEE 991</small> <small>IEEE 992</small> <small>IEEE 993</small> <small>IEEE 994</small> <small>IEEE 995</small> <small>IEEE 996</small> <small>IEEE 997</small> <small>IEEE 998</small> <small>IEEE 999</small>		<p>ADALET A SCOTT PETERSON COMPANY Enclosure Systems Cable Accessories</p> <p>DATE: 10/20/01 DRAWN BY: DDH DATE: 4-20-01 CHECKED BY: DDH DATE: 1-2-01 DESIGNED BY: DDH DATE: 1-2-01 APPROVED BY: DDH DATE: 1-2-01 SCALE: 1=2 SHEET: D REV: 10F1</p> <p>PROJECT: XCE/XIF 061105 TITLE: MODIFIED XCE/XIF 061105 ENCLOSURE FOR</p>
---	--	--