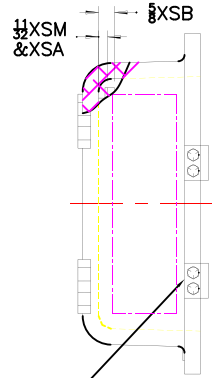
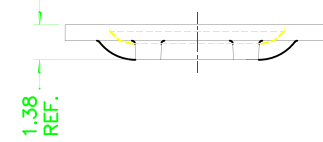
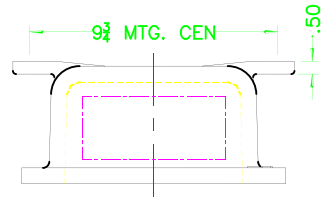
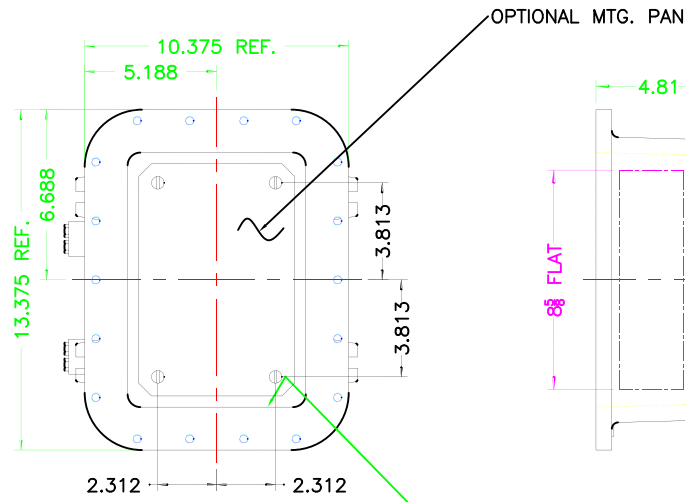


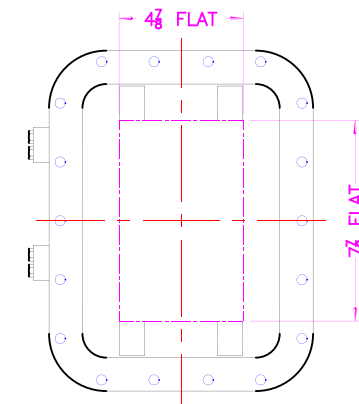
REV	REVISION	BY	ECN	DATE



OPTIONAL XHB-2 HINGES



EXISTING GRD. SCREW

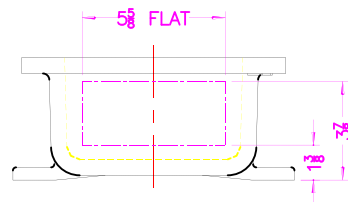


XCE 0710 COVER

NOTES:

COVER DRILLING ALLOWABLE IN XCE ONLY

1. MINIMUM SPACING FROM CENTER OF OPERATOR TO NEAREST FLAT IS $1\frac{1}{8}$.
2. MINIMUM SPACING BETWEEN $\frac{3}{4}$ -14 NPSM OPERATOR CENTERS IS $2\frac{1}{2}$ FOR THIS ENCLOSURE.
3. MAXIMUM NUMBER OF OPERATORS IS 6.
4. DIMENSION FROM CENTER LINES OF COVER FOR OPERATORS.
5. DIMENSION FROM CENTER LINE AND BACK OF MTG. LUG FOR CONDUIT.
6. FOR MTG. ENCLOSURE USE $\frac{3}{8}$ BOLT.



DO NOT SCALE DRAWING UNLESS OTHERWISE SPECIFIED DIMENSIONS ARE IN INCHES. CAST TOLERANCES ON DIMENSIONS NOT OTHERWISE SPECIFIED: Fillet R. = 1/8" STOCK DRAFT 1 1/2" FRAC ± 1/16" ANGLES ± 1° MACHINE TOLERANCES ON DIMENSIONS NOT OTHERWISE SPECIFIED: √ = 125 Fillet R. = .03" .300 ± .010" EDGE BREAK .005"-.015" R. or 45° ANGLES ± 0°-30° GAGING FOR THREADED HOLES NOT OTHERWISE SPECIFIED: NPT E-21-2.6 NPSM E-24-1.0		ADALET A SCOTT FETZER COMPANY Enclosure Systems - Cable Accessories		TITLE MODIFIED XCE/XJF 071004 ENCLOSURE FOR	
NOTICE TO PERSONS RECEIVING THIS DRAWING: ADALET-PLM CLAIMS PROPRIETARY RIGHTS IN THE MATERIAL DISCLOSED HEREON. THIS DRAWING IS ISSUED IN CONFIDENCE FOR ENGINEERING INFORMATION ONLY AND MAY NOT BE REPRODUCED OR USED TO MANUFACTURE, WITHOUT SHOWN HEREON, WITHOUT DIRECT WRITTEN PERMISSION FROM ADALET-PLM TO THE USER.		DRAWN BY	DDH	DATE	6-12-01
MATERIAL		ENG APPROVAL		PLOT SCALE	1=4
FINISH		MFG APPROVAL		DWG SIZE	C
CAT NO		XCE/XJF 071004		DWG NO	
				SHT	10F1
				REV	