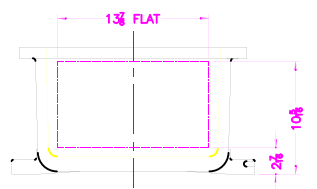


XCE 1646 COVER

- NOTES:
- COVER DRILLING ALLOWABLE IN XCE ONLY
1. MINIMUM SPACING FROM CENTER OF OPERATOR TO NEAREST FLAT IS 1 1/8".
  2. MINIMUM SPACING BETWEEN 3/4"-14 NPSM OPERATOR CENTERS IS 3/4" FOR THIS ENCLOSURE.
  3. MAXIMUM NUMBER OF OPERATORS IS 48.
  4. DIMENSION FROM CENTER LINES OF COVER FOR OPERATORS.
  5. DIMENSION FROM CENTER LINE AND BACK OF MTG. LUG FOR CONDUIT.
  6. FOR MTG. ENCLOSURE USE 3/8" BOLT.



DO NOT SCALE DRAWING	<b>ADALET</b> A SCOTT PETERSON COMPANY Electrical Systems Cable Accessories		TITLE MODIFIED XCE/XJF 164610 ENCLOSURE FOR	
UNLESS OTHERWISE SPECIFIED	DRAWING IS PROPERTY AND NOT BE LOANED, REPRODUCED, COPIED, OR TRANSMITTED IN ANY MANNER WITHOUT WRITTEN PERMISSION OF ADALET.		DRAWN BY DDH	DATE 11-15-01
CONTOUR DIMENSIONS UNLESS OTHERWISE SPECIFIED	DIMENSIONS ARE IN INCHES UNLESS OTHERWISE SPECIFIED.		DIM APPROVAL	PLOT SCALE 1=6
ALL DIMENSIONS ARE TO CENTER UNLESS OTHERWISE SPECIFIED	DIMENSIONS ARE TO CENTER UNLESS OTHERWISE SPECIFIED.		MFG APPROVAL	DIM SIZE D
FINISH UNLESS OTHERWISE SPECIFIED	DIMENSIONS ARE TO CENTER UNLESS OTHERWISE SPECIFIED.		DIM NO TUMBLAST	REV 10F1
DRY UNLESS OTHERWISE SPECIFIED	DIMENSIONS ARE TO CENTER UNLESS OTHERWISE SPECIFIED.		DIM NO XCE/XJF 164610	