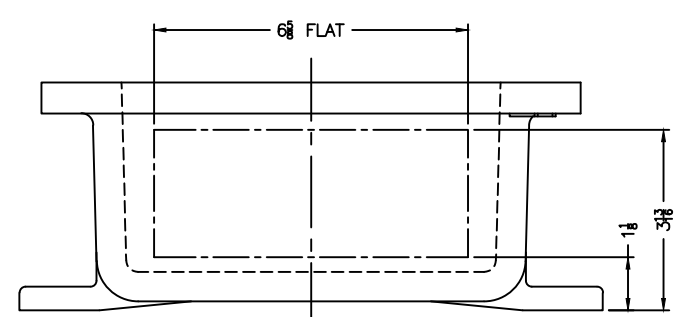


### XCE 0808 COVER



#### NOTES:

- COVER DRILLING ALLOWABLE IN XCE ONLY
1. MINIMUM SPACING FROM CENTER OF OPERATOR TO NEAREST FLAT IS 1 1/4".
  2. MINIMUM SPACING BETWEEN 1/4"-14 NPSM OPERATOR CENTERS IS 2 1/2" FOR THIS ENCLOSURE.
  3. MAXIMUM NUMBER OF OPERATORS IS 4.
  4. DIMENSION FROM CENTER LINES OF COVER FOR OPERATORS.
  5. DIMENSION FROM CENTER LINE AND BACK OF MTG. LUG FOR CONDUIT.
  6. FOR MTG. ENCLOSURE USE 3/8 BOLT.

DO NOT SCALE DRAWING UNLESS OTHERWISE SPECIFIED DIMENSIONS ARE IN INCHES. FASTENERS UNLESS SPECIFIED NOT OTHERWISE SPECIFIED: 1/2" = 1/8" STOCK Fillet or corner radii 1/8" DRAFT 1/2" FRAC ± 1/16" ANGLES ± 1°	<b>ADALET</b> A SCOTT FETZER COMPANY Enclosure Systems • Cable Accessories	TITLE MODIFIED XCE/XJF 080804 ENCLOSURE FOR
MACHINE TOLERANCES ON DIMENSIONS NOT OTHERWISE SPECIFIED: F = 1/32" JOK ± .010" EDGE BREAK .005" - .015" R. or 45° ANGLES ± 0-30°	NOTICE TO PERSONS RECEIVING THIS DRAWING: ADALET-PLM CLAIMS PROPRIETARY RIGHTS IN THE MATERIAL DISCLOSED HEREIN. THIS DRAWING IS ISSUED IN CONFIDENCE FOR ENGINEERING INFORMATION ONLY AND MAY NOT BE REPRODUCED OR USED TO MANUFACTURE ANYTHING SHOWN HEREIN WITHOUT EXPRESS WRITTEN PERMISSION FROM ADALET-PLM TO THE USER.	DRAWN BY DDH DATE 6-12-01 ENG APPROVAL MFG APPROVAL DWG BASE D
GAGING FOR THERMIST HOLES NOT OTHERWISE SPECIFIED: NPSM E-21-2.5 NPSM E-24-1.0	FINISH TUMBLAST CAT NO XCE/XJF 080804	DWG NO SET REV 10F1