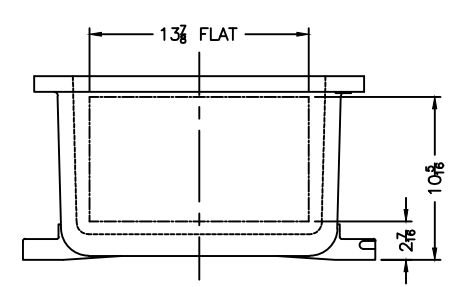


XCE 1646 COVER

NOTES:

- COVER DRILLING ALLOWABLE IN XCE ONLY
1. MINIMUM SPACING FROM CENTER OF OPERATOR TO NEAREST FLAT IS 1 1/8.
  2. MINIMUM SPACING BETWEEN 1/2-14 NPSM OPERATOR CENTERS IS 3 1/2 FOR THIS ENCLOSURE.
  3. MAXIMUM NUMBER OF OPERATORS IS 48.
  4. DIMENSION FROM CENTER LINES OF COVER FOR OPERATORS.
  5. DIMENSION FROM CENTER LINE AND BACK OF MTG. LUG FOR CONDUIT.
  6. FOR MTG. ENCLOSURE USE 5/8 BOLT.



DO NOT SCALE DRAWING UNLESS OTHERWISE SPECIFIED DIMENSIONS ARE IN INCHES. CAST TOLERANCES ON DIMENSIONS NOT OTHERWISE SPECIFIED: 1/2" - 1/8" STOCK FLAT OR CORNER RADII 1/8" DIA. ± 1/32" FRAC. ± 1/16" ANGLES ± 1° MACHINE TOLERANCES ON DIMENSIONS NOT OTHERWISE SPECIFIED: 1/2" - 1/8" ± .015" 1/8" - 1/4" ± .010" EDGE BREAK .005" - .015" R. or 45° ANGLES ± 0-30° GAGING FOR THERMIST HOLES NOT OTHERWISE SPECIFIED: NPSM E-24-1.0	<p><b>ADALET</b> A SCOTT FETZER COMPANY Enclosure Systems • Cable Accessories</p> <p>NOTICE TO PERSONS RECEIVING THIS DRAWING: ADALET-PLM, CLAIM PROPRIETARY RIGHTS IN THE MATERIAL DISCLOSED HEREON. THIS DRAWING IS ISSUED IN CONFIDENCE FOR EXHAUSTIVE INFORMATION ONLY AND MAY NOT BE REPRODUCED OR USED TO MANUFACTURE ANYTHING SHOWN HEREON WITHOUT EXPRESS WRITTEN PERMISSION FROM ADALET-PLM TO THE USER.</p> <p>MATERIAL: TUMBLAST</p> <p>PERISH: XCE/XJF 164610</p>	<p>TITLE MODIFIED XCE/XJF 164610 ENCLOSURE FOR</p> <p>DRAWN BY DDH DATE 11-15-01</p> <p>ENG APPROVAL DATE 11-15-01</p> <p>PLG SCALE 1=6</p> <p>MFG APPROVAL DATE D</p> <p>DWG NO. 10F1</p>
---	---	--