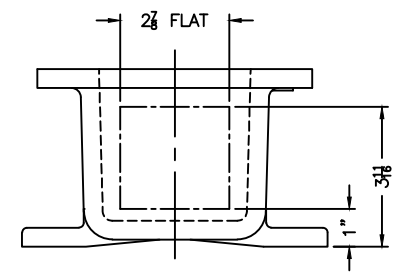


XCE 0416 COVER

NOTES:

- COVER DRILLING ALLOWABLE IN XCE ONLY—
1. MINIMUM SPACING FROM CENTER OF OPERATOR TO NEAREST FLAT IS $1\frac{1}{8}$.
 2. MINIMUM SPACING BETWEEN $\frac{3}{4}$ –14 NPSM OPERATOR CENTERS IS $2\frac{1}{2}$ FOR THIS ENCLOSURE.
 3. MAXIMUM NUMBER OF OPERATORS IS 5.
 4. DIMENSION FROM CENTER LINES OF COVER FOR OPERATORS.
 5. DIMENSION FROM CENTER LINE AND BACK OF MTG. LUG FOR CONDUIT.
 6. FOR MTG. ENCLOSURE USE $\frac{3}{8}$ BOLT.



<small>DO NOT SCALE DRAWING UNLESS OTHERWISE SPECIFIED DIMENSIONS ARE IN INCHES. CUT TOLERANCES OR DIMENSIONS NOT OTHERWISE SPECIFIED: 1/2" = 1/8" STOCK FILLET OR CORNER RAD 1/8" DIAIT ± 1/32 FRAC ± 1/16 ANGLES ± 1° MACHINE TOLERANCES ON DIMEN- SIONS NOT OTHERWISE SPECIFIED: ∠ = 12° DIA ± .015 XOX ± .010 EDGE BREAK .005"-.015" R. or 45° ANGLES ± 0-30° GAGING FOR THERMAD HOLE NOT OTHERWISE SPECIFIED: NPSM E-24-1.0</small>	ADALET <small>A SCOTT FETZER COMPANY</small> Enclosure Systems • Cable Accessories	<small>NOTICE TO PERSONS RECEIVING THIS DRAWING: ADALET-PLM CLAIMS PROPRIETARY RIGHTS IN THE MATERIAL DISCLOSED HEREON. THIS DRAWING IS ISSUED IN CONFIDENCE FOR EXHAUSTIVE INFORMATION ONLY AND MAY NOT BE REPRODUCED OR USED TO MANUFACTURE ANYTHING SHOWN HEREON WITHOUT EXPLICIT WRITTEN PERMISSION FROM ADALET-PLM TO THE USER.</small>		<small>TITLE</small> MODIFIED XCE/XJF 041604 ENCLOSURE FOR	
		<small>DRAWN BY</small> DDH	<small>DATE</small> 4-20-01	<small>ENG APPROVAL</small>	<small>PLAT SCALE</small> 1=2.5
		<small>MFG APPROVAL</small>	<small>DWG SIZE</small> D	<small>DWG NO</small>	<small>SHEET</small> 10F1
		<small>PERISH</small> TUMBLAST	<small>CAT NO</small> XCE/XJF 041604	<small>REV</small>	