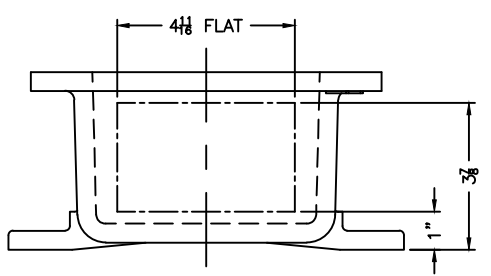


XCE 0612 COVER

NOTES:

- COVER DRILLING ALLOWABLE IN XCE ONLY—
1. MINIMUM SPACING FROM CENTER OF OPERATOR TO NEAREST FLAT IS 1 1/8.
 2. MINIMUM SPACING BETWEEN 3/4-14 NPSM OPERATOR CENTERS IS 2 1/2 FOR THIS ENCLOSURE.
 3. MAXIMUM NUMBER OF OPERATORS IS 4.
 4. DIMENSION FROM CENTER LINES OF COVER FOR OPERATORS.
 5. DIMENSION FROM CENTER LINE AND BACK OF MTG. LUG FOR CONDUIT.
 6. FOR MTG. ENCLOSURE USE 3/8 BOLT.



<small>DO NOT SCALE DRAWING UNLESS OTHERWISE SPECIFIED DIMENSIONS ARE IN INCHES. CASE TOLERANCES ON DIMENSIONS NOT OTHERWISE SPECIFIED: 1/2" = 1/16" STOCK Fillet or corner radii 1/8" DRAFT 1/2" FRAC ± 1/16" ANGLES ± 1° MACHINE TOLERANCES ON DIMENSIONS NOT OTHERWISE SPECIFIED: 1/2" = 1/32" HOLE ± .015" JOK ± .010" EDGE BREAK .005" - .015" R. or 45° ANGLES ± 0-30° GAGING FOR THERMAID HOLES NOT OTHERWISE SPECIFIED: NPSM E-21-2.5 NPSM E-24-1.0</small>	ADALET <small>A SCOTT FETZER COMPANY</small> Enclosure Systems • Cable Accessories	<small>NOTICE TO PERSONS RECEIVING THIS DRAWING: ADALET-PLM CLAIMS PROPRIETARY RIGHTS IN THE MATERIAL DISCLOSED HEREIN. THIS DRAWING IS ISSUED IN CONFIDENCE FOR ENGINEERING INFORMATION ONLY AND MAY NOT BE REPRODUCED OR USED TO MANUFACTURE ANYTHING SHOWN HEREIN WITHOUT EXPRESS WRITTEN PERMISSION FROM ADALET-PLM TO THE USER.</small>		<small>TITLE</small> MODIFIED XCE/XJF 061204 ENCLOSURE FOR	
		<small>DRAWN BY</small> DDH	<small>DATE</small> 4-20-01	<small>ENG APPROVAL</small> 	<small>PLANT SCALE</small> 1=2.5
		<small>MFG APPROVAL</small> 	<small>DWG NO</small> 	<small>SET</small> D	<small>REV</small>
		<small>CAT NO</small> XCE/XJF 061204	<small>TUMBLAST</small> 	<small>10F1</small> 	