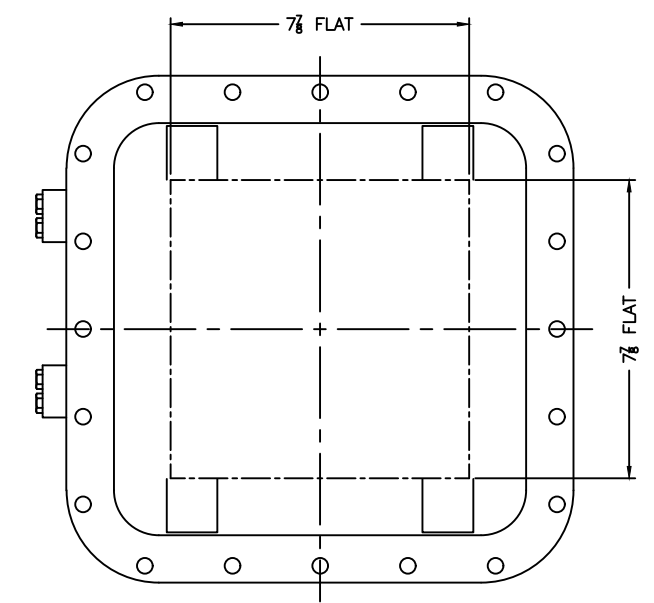
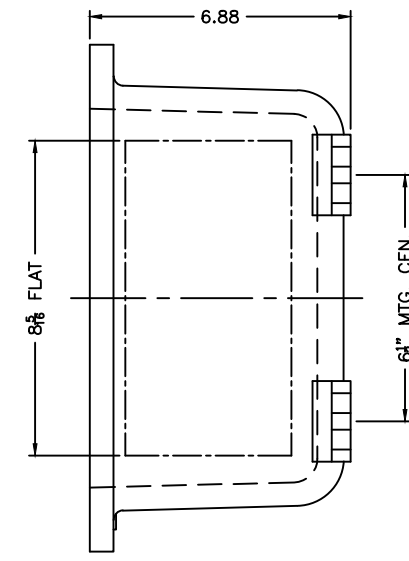
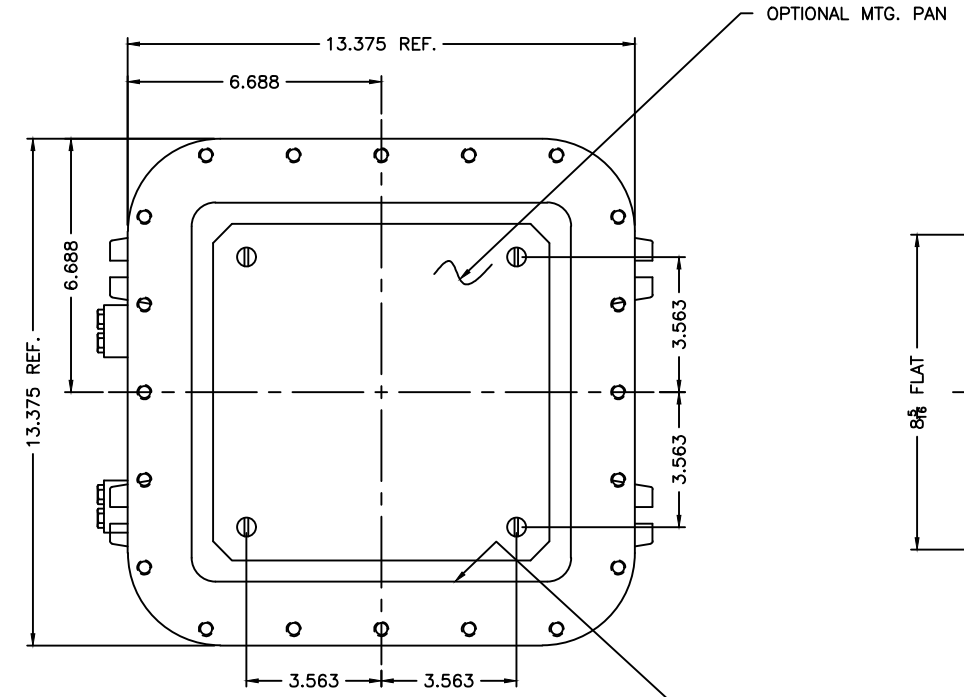
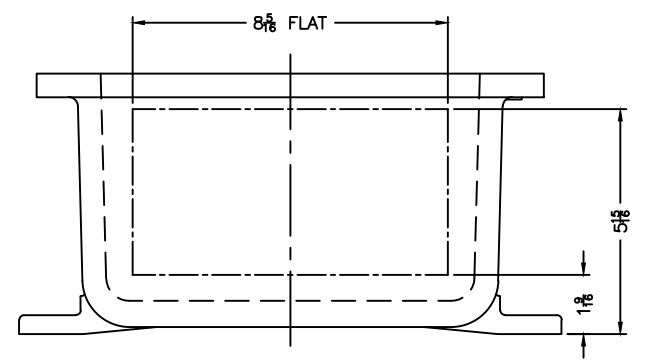


OPTIONAL XHB-2 HINGE



XCE 1010 COVER



NOTES:

- COVER DRILLING ALLOWABLE IN XCE ONLY
1. MINIMUM SPACING FROM CENTER OF OPERATOR TO NEAREST FLAT IS 1 1/8".
 2. MINIMUM SPACING BETWEEN 1/4-14 NPSM OPERATOR CENTERS IS 2 1/2" FOR THIS ENCLOSURE.
 3. MAXIMUM NUMBER OF OPERATORS IS 9.
 4. DIMENSION FROM CENTER LINES OF COVER FOR OPERATORS.
 5. DIMENSION FROM CENTER LINE AND BACK OF MTG. LUG FOR CONDUIT.
 6. FOR MTG. ENCLOSURE USE 3/8 BOLT.

| | | | |
|---|--|---|------------------------------------|
| <small>DO NOT SCALE DRAWING</small> <small>UNLESS OTHERWISE SPECIFIED DIMENSIONS ARE IN INCHES.</small> <small>CASE TOLERANCES ON DIMENSIONS NOT OTHERWISE SPECIFIED: 1/2" = 1/8" STOCK</small> <small>FLAT OR CORNER RADII 1/8"</small> <small>SHOULDER 1/2"</small> <small>FRAC ± 1/16"</small> <small>ANGLES ± 1°</small> <small>MACHINE TOLERANCES ON DIMENSIONS NOT OTHERWISE SPECIFIED: 1/4" = 1/32"</small> <small>Ø ± .015"</small> <small>Ø ± .010"</small> <small>EDGE BREAK .005" - .015" R. or 45°</small> <small>ANGLES ± 0°-30°</small> <small>GAGING FOR THERMAID HOLES NOT OTHERWISE SPECIFIED: NPSM E-24-1.0</small> | ADALET <small>A SCOTT FETZER COMPANY</small> <small>Enclosure Systems • Cable Accessories</small> | <small>TITLE</small> MODIFIED XCE/XJF 101006 ENCLOSURE FOR | |
| | | <small>DRAWN BY</small> DDH | <small>DATE</small> 6-13-01 |
| | | <small>ENG APPROVAL</small> | <small>PLAT SCALE</small> 1=2.5 |
| | | <small>MFG APPROVAL</small> | <small>DWG BOX</small> D |
| <small>PURCH</small> TUMBLAST | <small>DWG NO</small> XCE/XJF 101006 | <small>SET</small> 10F1 | <small>REV</small> |