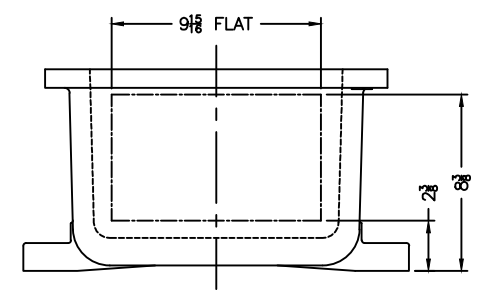


OPTIONAL XHD-3 HINGES

EXISTING GRD. SCREW



### XCE 1236 COVER

NOTES:

- COVER DRILLING ALLOWABLE IN XCE ONLY
1. MINIMUM SPACING FROM CENTER OF OPERATOR TO NEAREST FLAT IS 1 1/8.
  2. MINIMUM SPACING BETWEEN 1/2-14 NPSM OPERATOR CENTERS IS 3 FOR THIS ENCLOSURE.
  3. MAXIMUM NUMBER OF OPERATORS IS 33.
  4. DIMENSION FROM CENTER LINES OF COVER FOR OPERATORS.
  5. DIMENSION FROM CENTER LINE AND BACK OF MTG. LUG FOR CONDUIT.
  6. FOR MTG. ENCLOSURE USE 3/8 BOLT.

|  |  |  |  |   |  |  |  |
|--|--|--|--|---|--|--|--|
| <small>DO NOT SCALE DRAWING</small><br><small>UNLESS OTHERWISE SPECIFIED DIMENSIONS ARE IN INCHES.</small><br><small>CAST TOLERANCES ON DIMENSIONS NOT OTHERWISE SPECIFIED:</small><br><small>1/2" - 1/8" STOCK</small><br><small>FILLET OR CORNER RADI 1/8"</small><br><small>DIAIT ± 1/32</small><br><small>FRAC ± 1/16</small><br><small>ANGLES ± 1°</small><br><small>MACHINE TOLERANCES ON DIMENSIONS NOT OTHERWISE SPECIFIED:</small><br><small>1/2" ± .005</small><br><small>1/4" ± .003</small><br><small>1/8" ± .002</small><br><small>EDGE BREAK .005" - .015" R. or 45°</small><br><small>ANGLES ± 0-30°</small><br><small>GAGING FOR THERMAD HOLE</small><br><small>NOT OTHERWISE SPECIFIED:</small><br><small>NPSM E-24-1.0</small> |  | <b>ADALET</b><br><small>A SCOTT FETZER COMPANY</small><br><small>Enclosure Systems • Cable Accessories</small> |  | <small>NOTICE TO PERSONS RECEIVING THIS DRAWING:</small><br><small>ADLET-PLM CLAIMS PROPRIETARY RIGHTS IN THE MATERIAL DISCLOSED HEREIN. THIS DRAWING IS ISSUED IN CONFIDENCE FOR EXHAUSTIVE INFORMATION ONLY AND MAY NOT BE REPRODUCED OR USED TO MANUFACTURE ANYTHING SHOWN HEREIN WITHOUT EXPRESS WRITTEN PERMISSION FROM ADLET-PLM TO THE USER.</small><br><small>MATERIAL:</small><br><small>FINISH:</small> TUMBLAST<br><small>CAT NO:</small> XCE/XJF 123608 |  | <small>TITLE:</small> MODIFIED XCE/XJF 123608 ENCLOSURE FOR<br><small>DRAWN BY:</small> DDH<br><small>DATE:</small> 11-13-01<br><small>ENG APPROVAL:</small><br><small>PLWG SCALE:</small> 1=4,5<br><small>MFG APPROVAL:</small><br><small>DWG BOX:</small> D<br><small>DWG NO:</small><br><small>SET:</small> 10F1<br><small>REV:</small> |  |
|--|--|--|--|---|--|--|--|