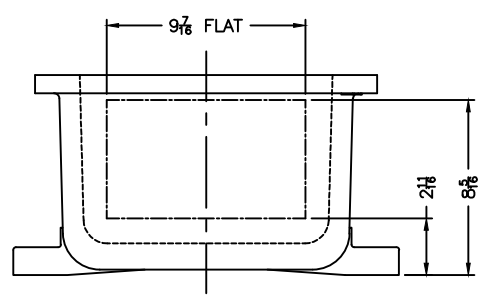


OPTIONAL XHD-4 HINGES

EXISTING GRD. SCREW

XCE 1246 COVER



- COVER DRILLING ALLOWABLE IN XCE ONLY
- NOTES:
1. MINIMUM SPACING FROM CENTER OF OPERATOR TO NEAREST FLAT IS 1 1/8.
 2. MINIMUM SPACING BETWEEN 3/4-14 NPSM OPERATOR CENTERS IS 3 FOR THIS ENCLOSURE.
 3. MAXIMUM NUMBER OF OPERATORS IS 42.
 4. DIMENSION FROM CENTER LINES OF COVER FOR OPERATORS.
 5. DIMENSION FROM CENTER LINE AND BACK OF MTG. LUG FOR CONDUIT.
 6. FOR MTG. ENCLOSURE USE 5/8 BOLT.

| | | | |
|---|--|---|---|
| <small>DO NOT SCALE DRAWING</small> <small>UNLESS OTHERWISE SPECIFIED DIMENSIONS ARE IN INCHES.</small> <small>CAST TOLERANCES OR DIMENSIONS NOT OTHERWISE SPECIFIED:</small> <small>1/2" = 1/16" STOCK</small> <small>FILLET OR CORNER RADII 1/8"</small> <small>SHOULDER 1/16"</small> <small>FRAC ± 1/16"</small> <small>ANGLES ± 1°</small> <small>MACHINE TOLERANCES ON DIMENSIONS NOT OTHERWISE SPECIFIED:</small> <small>1/4" = 1/32"</small> <small>1/8" = .015"</small> <small>1/16" = .010"</small> <small>EDGE BREAK .005"-.015" R. or 45°</small> <small>ANGLES ± 0-30°</small> <small>GAGING FOR THERMAD HOLE</small> <small>NOT OTHERWISE SPECIFIED:</small> <small>NPSM E-21-1.4</small> <small>NPSM E-24-1.0</small> | | <small>MODIFIED XCE/XJF 124608 ENCLOSURE FOR</small> | |
| | | <small>NOTICE TO PERSONS RECEIVING THIS DRAWING:</small> <small>ADALET-PLM CLAIMS PROPRIETARY RIGHTS IN THE MATERIAL DISCLOSED HEREON. THIS DRAWING IS ISSUED IN CONFIDENCE FOR EXHAUSTIVE INFORMATION ONLY AND MAY NOT BE REPRODUCED OR USED TO MANUFACTURE ANYTHING SHOWN HEREON WITHOUT EXPRESS WRITTEN PERMISSION FROM ADALET-PLM TO THE USER.</small> | <small>DRAWN BY</small> DDH <small>DATE</small> 11-13-01 <small>ENG APPROVAL</small> <small>PLAT SCALE</small> 1=4.5 <small>MFG APPROVAL</small> <small>DWG SIZE</small> D |
| <small>PERISH</small> TUMBLAST <small>CAT NO</small> XCE/XJF 124608 | <small>DWG NO</small> <small>SHEET</small> 10F1 <small>REV</small> | | |