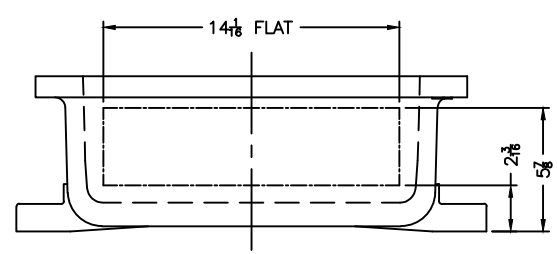


XCE 1628 COVER

NOTES:

- COVER DRILLING ALLOWABLE IN XCE ONLY
- MINIMUM SPACING FROM CENTER OF OPERATOR TO NEAREST FLAT IS 1 1/8.
- MINIMUM SPACING BETWEEN 3/4-14 NPSM OPERATOR CENTERS IS 3 1/2 FOR THIS ENCLOSURE.
- MAXIMUM NUMBER OF OPERATORS IS 28.
- DIMENSION FROM CENTER LINES OF COVER FOR OPERATORS.
- DIMENSION FROM CENTER LINE AND BACK OF MTG. LUG FOR CONDUIT.
- FOR MTG. ENCLOSURE USE 5/8 BOLT.



<p>DO NOT SCALE DRAWING</p> <p>UNLESS OTHERWISE SPECIFIED DIMENSIONS ARE IN INCHES.</p> <p>CAST TOLERANCES ON DIMENSIONS NOT OTHERWISE SPECIFIED: $\pm .005$</p> <p>MACHINING TOLERANCES ON DIMENSIONS NOT OTHERWISE SPECIFIED: $\pm .005$</p> <p>ANGLE: $\pm 1^\circ$</p> <p>EDGE BREAK: .005" - .015" R. or 45°</p> <p>ANGLES: $\pm 0-30^\circ$</p> <p>GAGING FOR THERMIST HOLES NOT OTHERWISE SPECIFIED: NPSM E-21-2.2 NPSM E-24-1.0</p>	<p>ADALET</p> <p>A SCOTT FETZER COMPANY</p> <p>Enclosure Systems • Cable Accessories</p> <p>NOTICE TO PERSONS RECEIVING THIS DRAWING: ADAL-PLM, CLAIM PROPRIETARY RIGHTS IN THE MATERIAL DISCLOSED HEREIN. THIS DRAWING IS ISSUED IN CONFIDENCE FOR ENGINEERING INFORMATION ONLY AND MAY NOT BE REPRODUCED OR USED TO MANUFACTURE ANYTHING SHOWN HEREIN WITHOUT EXPRESS WRITTEN PERMISSION FROM ADAL-PLM TO THE USER.</p> <p>MATERIAL: TUMBLAST</p> <p>DATE NO: XCE/XJF 162806</p>	<p>TITLE: MODIFIED XCE/XJF 162806 ENCLOSURE FOR</p> <p>DRAWN BY: DDH</p> <p>DATE: 11-15/01</p> <p>ENG APPROVAL: [Signature]</p> <p>PLANT SCALE: 1=4.5</p> <p>DWG APPROVAL: [Signature]</p> <p>DWG SIZE: D</p> <p>DWG NO: [Blank]</p> <p>SET: 10F1</p> <p>REV: [Blank]</p>
---	---	---