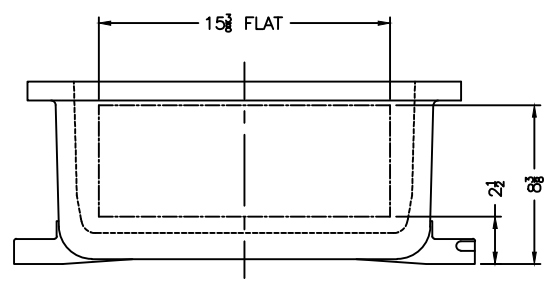


XCE 1824 COVER

NOTES:

- COVER DRILLING ALLOWABLE IN XCE ONLY
1. MINIMUM SPACING FROM CENTER OF OPERATOR TO NEAREST FLAT IS 1 1/8.
 2. MINIMUM SPACING BETWEEN 1/2-14 NPSM OPERATOR CENTERS IS 3 1/2 FOR THIS ENCLOSURE.
 3. MAXIMUM NUMBER OF OPERATORS IS 24.
 4. DIMENSION FROM CENTER LINES OF COVER FOR OPERATORS.
 5. DIMENSION FROM CENTER LINE AND BACK OF MTG. LUG FOR CONDUIT.
 6. FOR MTG. ENCLOSURE USE 3/8 BOLT.



<small>DO NOT SCALE DRAWING</small> <small>UNLESS OTHERWISE SPECIFIED</small> <small>DIMENSIONS ARE IN INCHES.</small> <small>CAST TOLERANCES ON DIMENSIONS</small> <small>NOT OTHERWISE SPECIFIED:</small> <small>1/2" - 1/8" STOCK</small> <small>FILLET OR CORNER RADI 1/8"</small> <small>SHAFT 1/2"</small> <small>FRAC ± 1/16"</small> <small>ANGLES ± 1°</small> <small>MACHINE TOLERANCES ON DIMENSIONS NOT OTHERWISE SPECIFIED:</small> <small>F ± .125</small> <small>AX ± .03</small> <small>FILLET RADIUS .03"</small> <small>EDGE BREAK .005" - .015" R. or 45°</small> <small>ANGLES ± 0-30°</small> <small>GAGING FOR THERMATED HOLES</small> <small>NOT OTHERWISE SPECIFIED:</small> <small>HPT E-24-1.0</small>		<small>TITLE</small> MODIFIED XCE/XJF 182408 ENCLOSURE FOR	
		<small>NOTICE TO PERSONS RECEIVING THIS DRAWING:</small> <small>ADALET-PLM CLAIMS PROPRIETARY RIGHTS IN THE MATERIAL</small> <small>DISCLOSED HEREIN. THIS DRAWING IS ISSUED IN CONFIDENCE</small> <small>FOR ENGINEERING INFORMATION ONLY AND MAY NOT BE REPRODUCED</small> <small>OR USED TO MANUFACTURE ANYTHING SHOWN HEREIN WITHOUT</small> <small>DIRECT WRITTEN PERMISSION FROM ADALET-PLM TO THE USER.</small>	<small>DRAWN BY</small> DDH <small>DATE</small> 11-16-01
<small>PERISH</small> TUMBLAST <small>CAT NO</small> XCE/XJF 182408	<small>ENG APPROVAL</small> <small>MFG APPROVAL</small>	<small>PLANT SCALE</small> 1=5 <small>DWG BOX</small> D	<small>REV</small> 10F1

OPTIONAL XHF-2 HINGES

EXISTING GRD. SCREW

OPTIONAL MTG. PAN