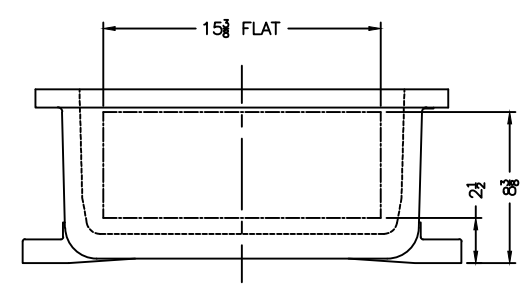


XCE 1836 COVER

NOTES:

- COVER DRILLING ALLOWABLE IN XCE ONLY
1. MINIMUM SPACING FROM CENTER OF OPERATOR TO NEAREST FLAT IS 1 1/8.
 2. MINIMUM SPACING BETWEEN 3/4-14 NPSM OPERATOR CENTERS IS 3 1/2 FOR THIS ENCLOSURE.
 3. MAXIMUM NUMBER OF OPERATORS IS 36.
 4. DIMENSION FROM CENTER LINES OF COVER FOR OPERATORS.
 5. DIMENSION FROM CENTER LINE AND BACK OF MTG. LUG FOR CONDUIT.
 6. FOR MTG. ENCLOSURE USE 3/8 BOLT.



DO NOT SCALE DRAWING UNLESS OTHERWISE SPECIFIED DIMENSIONS ARE IN INCHES. FAST TOLERANCES ON DIMENSIONS NOT OTHERWISE SPECIFIED: 1/2" = 1/8" STOCK FILLET OR CORNER RADII 1/8" DRAFT 1/2" FRAC ± 1/16" ANGLES ± 1°	ADALET — A SCOTT FETZER COMPANY Enclosure Systems • Cable Accessories	TITLE MODIFIED XCE/XJF 183608 ENCLOSURE FOR
NOTICE TO PERSONS RECEIVING THIS DRAWING: ADALET-PLM CLAIMS PROPRIETARY RIGHTS IN THE MATERIAL DISCLOSED HEREIN. THIS DRAWING IS ISSUED IN CONFIDENCE FOR EXHAUSTIVE INFORMATION ONLY AND MAY NOT BE REPRODUCED OR USED TO MANUFACTURE ANYTHING SHOWN HEREIN WITHOUT EXPLICIT WRITTEN PERMISSION FROM ADALET-PLM TO THE USER.	DRAWN BY DDH	DATE 11-16-01
MACHINE TOLERANCES ON DIMENSIONS NOT OTHERWISE SPECIFIED: 1/4" = 1/32" 1/8" = .015" 1/16" = .010" EDGE BREAK .005" - .015" R. or 45° ANGLES ± 0-30°	ENG APPROVAL	PLANT SCALE 1=5.25
GAGING FOR THERMAID HOLES NOT OTHERWISE SPECIFIED: NPSM E-21-2.2 NPSM E-24-1.0	APPROVAL TUMBLAST	DWG SIZE D
	DWG NO XCE/XJF 183608	REV 10F1