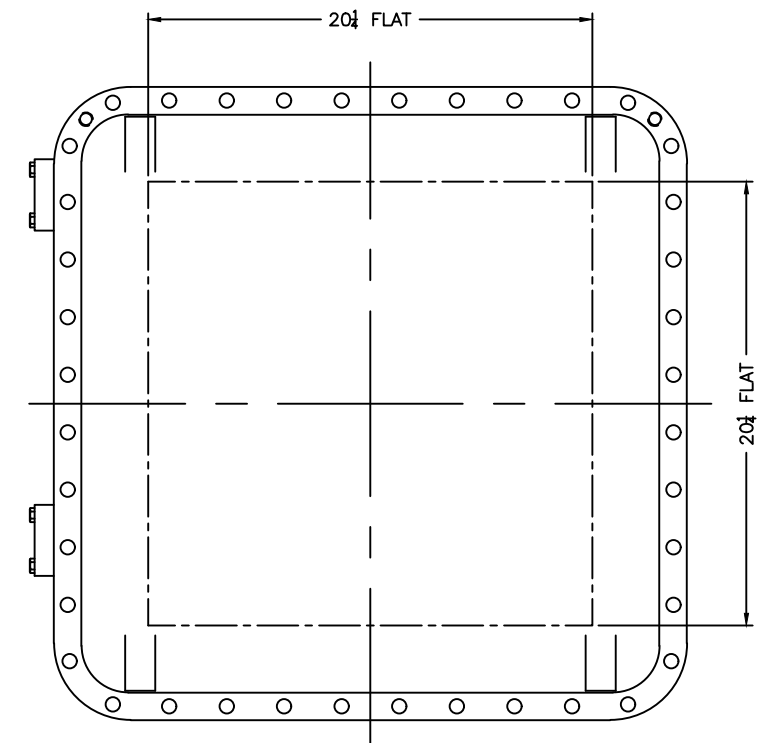
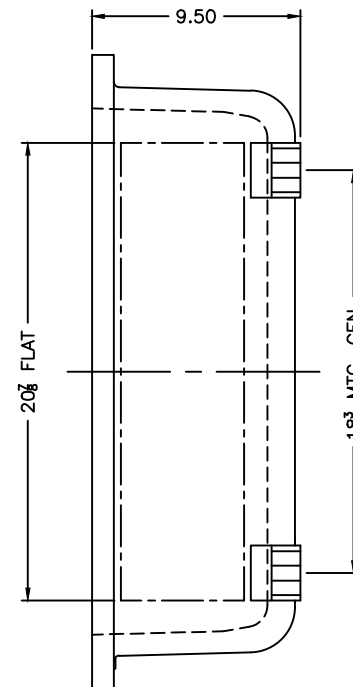
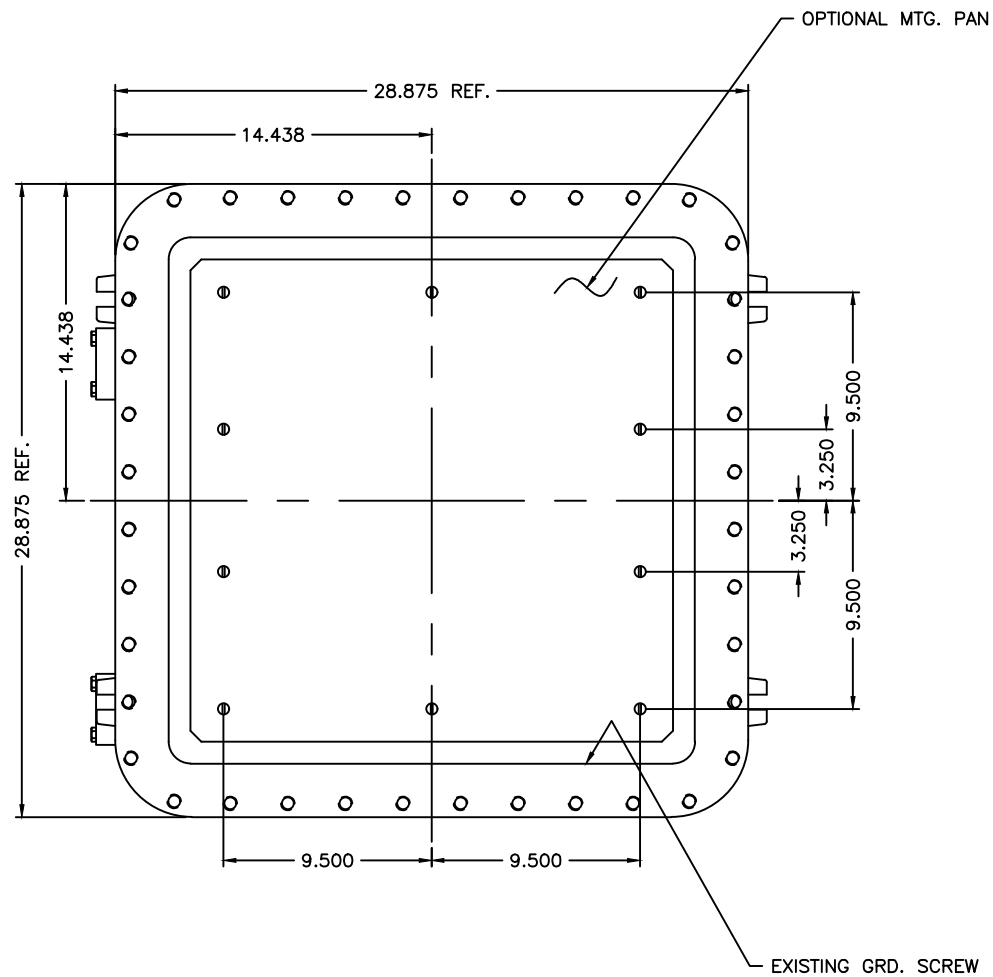
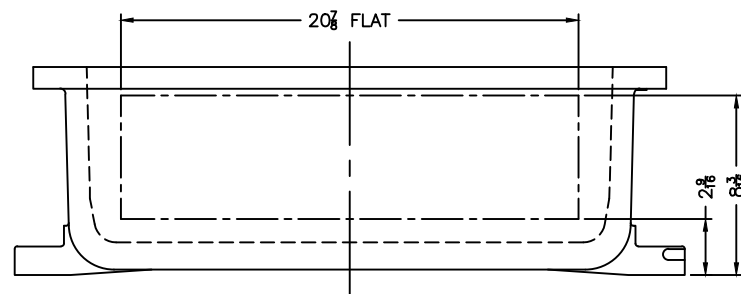


OPTIONAL XHF-2 HINGES



XCE 2424 COVER



NOTES:

- COVER DRILLING ALLOWABLE IN XCE ONLY
- 1. MINIMUM SPACING FROM CENTER OF OPERATOR TO NEAREST FLAT IS 1 1/8.
- 2. MINIMUM SPACING BETWEEN 3/4-14 NPSM OPERATOR CENTERS IS 3 1/2 FOR THIS ENCLOSURE.
- 3. MAXIMUM NUMBER OF OPERATORS IS 36.
- 4. DIMENSION FROM CENTER LINES OF COVER FOR OPERATORS.
- 5. DIMENSION FROM CENTER LINE AND BACK OF MTG. LUG FOR CONDUIT.
- 6. FOR MTG. ENCLOSURE USE 3/8 BOLT.

MODIFIED XCE/XJF 242408 ENCLOSURE FOR

DDH 01-08-02
1=4.5
D

TUMBLAST
XCE/XJF 242408

10F1