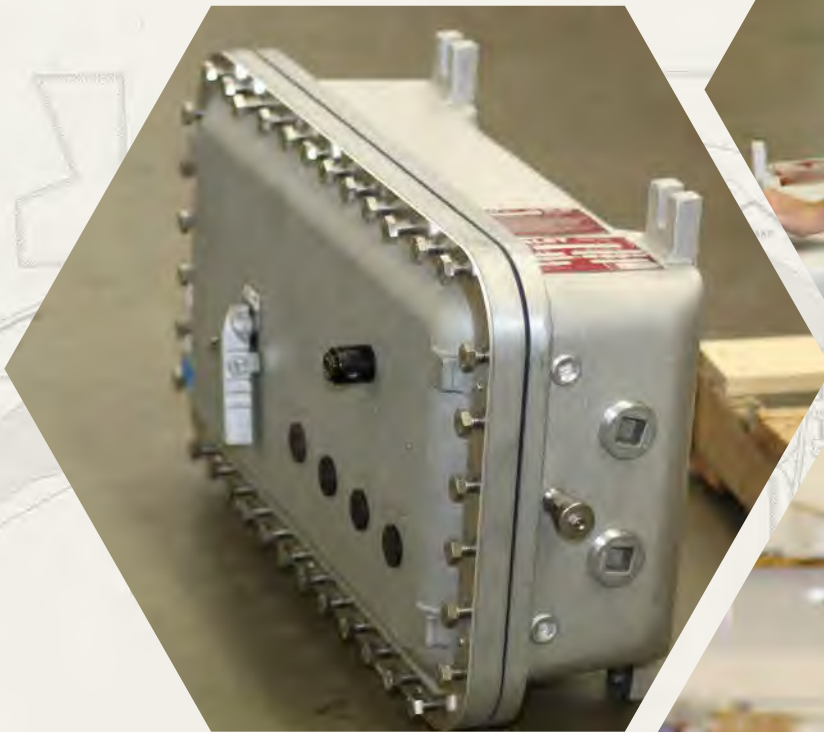


# NEMA7 .COM

ELECTRICAL CONTROL POL PANELS & EQUIPMENT FOR FOR ALL ALL TYPES OF ENVIRONMENTS



Our catalog showcases the core products that we offer. In addition to these items, we can also assist you with instrument housings, spin top, stainless steel, increased safety and ATEX enclosures from the Adalet product line.

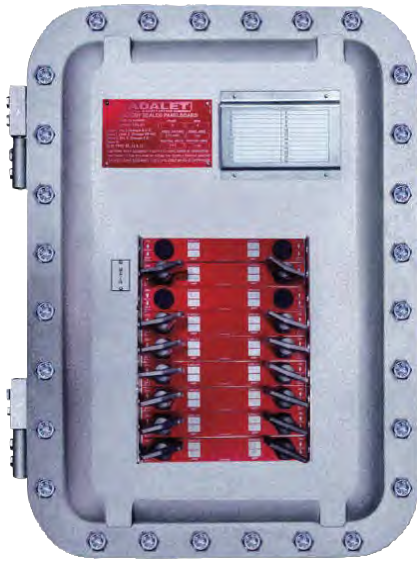
Lighting & Power Distribution Panels.....	3-4
Circuit Breaker Enclosures.....	5-6
NEMA 7 Fused & Non-Fused Disconnects.....	7
NEMA 4X Fusible & Non-Fused Disconnects.....	8
Combination & Across the Line Starters.....	9-10
MS 2000 – Manual Motor Starter.....	11
Explosion Proof Enclosures.....	12-14
Explosion Proof Control Stations.....	15
Explosion Proof Control Enclosures.....	16
NEMA 7 Selector Switches.....	17
NEMA 7 Pilot Lights & Push Buttons.....	18
Explosion Proof Flexible Couplings.....	19
Explosion Proof Fittings.....	20
Custom Control Panels.....	21
Factory-Sealed Panelboard.....	22
Switchracks.....	23

We're committed to providing premium services on explosion proof electrical equipment at competitive pricing, and we back our commitment with an in-stock inventory that is one of the largest in the United States.

Our services include:

- Complete wiring and assembly of electrical components per UL standards
- Turn-key solutions from design to delivery, including CAD capabilities
- In-house modification of enclosures to suit your requirements
- Expedited services available on in-stock items
- Experienced sales staff to provide immediate technical support

## LIGHTING AND POWER DISTRIBUTION PANELS



**ADALET**  
a Scott Fetzer company

### FEATURES

- Copper free cast aluminum alloy
- Same housings as Adalet XCE enclosures
- Cutler Hammer chassis copper buss with ground & isolated neutral bars
- Cutler Hammer bolt-on magnetic breakers (optional adder)
- Spring loaded breaker handles allow closing of cover with breaker toggle in any position (optional adder)
- Operating handles can be padlocked in “on” or “off” position

### CERTIFICATIONS

Class I, Groups B, C & D	}	}	UL 1203
Class II, Groups E, F & G			CSA C22.2 No. 25 & 30
Class III			
Type 4, 7, 9			UL 50

### ENCLOSURE DIMENSIONS

Part Number	Description (A)	Description (B)	Box Size	Voltage
XPB121L2	Lighting Panel · 12 Circuit	Single Phase, Three Wire · 225 Main Lug Only	A	120/240
XPB181L2	Lighting Panel · 18 Circuit	Single Phase, Three Wire · 225 Main Lug Only	B	120/240
XPB241L2	Lighting Panel · 24 Circuit	Single Phase, Three Wire · 225 Main Lug Only	B	120/240
XPB243L2	Lighting Panel · 24 Circuit	Three Phase, Four Wire · 225 Main Lug Only	B	120/208
XPB301L2	Lighting Panel · 30 Circuit	Single Phase, Three Wire · 225 Main Lug Only	D	120/240
XPB303L2	Lighting Panel · 30 Circuit	Three Phase, Four Wire · 225 Main Lug Only	D	120/208
XPB361L2	Lighting Panel · 36 Circuit	Single Phase, Three Wire · 225 Main Lug Only	D	120/240
XPB363L2	Lighting Panel · 36 Circuit	Three Phase, Four Wire · 225 Main Lug Only	D	120/208
XPBD243L2	Power Distribution Panel · 24 Circuit	Three Phase, Four Wire · 225 Main Lug Only	D	277/480

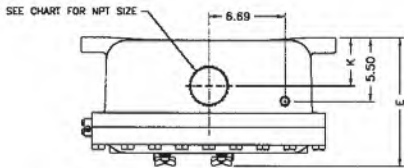
### BREAKER OPERATOR HANDLES

Part Number	Description
XPB1-H1	Operator for single pole BAB breaker
XPB1-H2	Operator for two pole BAB breaker
XPB1-H3	Operator for three pole BAB breaker
XPB2-H1	Operator for 1,2 or 3-pole GHB breaker

### BRANCH CIRCUIT BREAKERS

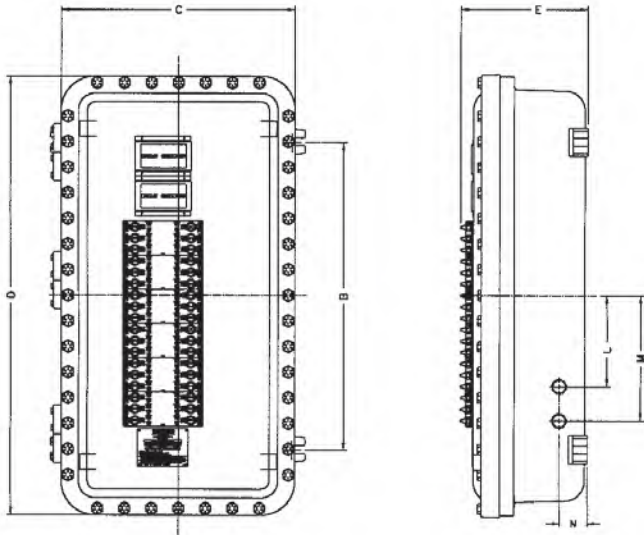
*Breaker Style	Part Number	Voltage
SINGLE POLE	BAB 1010 - BAB 1070	120/240
TWO POLE	BAB 2010 - BAB 2100	120/240
THREE POLE	BAB 3010H - BAB 3100H	240
*Breakers are sold installed in panelboard only		

## LIGHTING AND POWER DISTRIBUTION PANELS



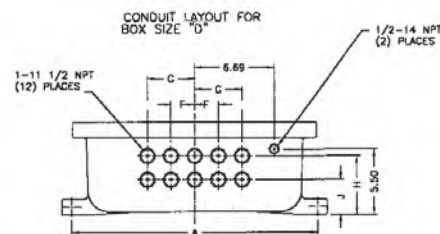
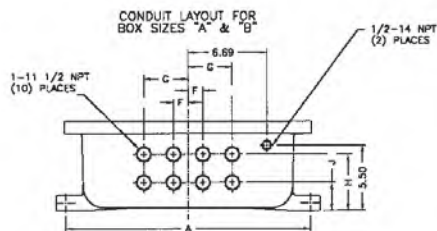
### PANELBOARD ENCLOSURE DIMENSIONS

Box Size	Box Inside Dimensions			Mtg Width (A)	Mtg Height (B)	Overall Cover (C)	Overall Cover (D)	Overall Each (E)
	W	L	D					
A	16	16	6	19 $\frac{3}{4}$	11	20 $\frac{7}{8}$	20 $\frac{7}{8}$	11
B	16	24	6	19 $\frac{3}{4}$	18 $\frac{3}{8}$	20 $\frac{7}{8}$	28 $\frac{7}{8}$	11 $\frac{1}{2}$
D	16	34	6	19 $\frac{3}{4}$	27	20 $\frac{1}{2}$	38 $\frac{1}{2}$	10 $\frac{3}{4}$



### CONDUIT ENTRIES

Box Size		1/2"	1"	2"	3"
A	Top	(1)	—	(1)	—
	Side	—	(2)	—	—
	Bottom	(1)	(8)	—	—
B	Top	(1)	—	(1)	—
	Side	—	(2)	—	—
	Bottom	(1)	(8)	—	—
D	Top	(1)	—	—	(1)
	Side	—	(2)	—	—
	Bottom	(1)	(10)	—	—

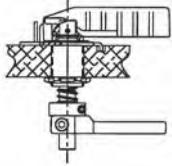


### ENCLOSURE CONDUIT DIMENSIONS

Box Size	F	G	H	J	K	L	M	N	Weight (lbs.)
A	1 $\frac{3}{4}$	3 $\frac{3}{4}$	4 $\frac{3}{4}$	2 $\frac{1}{2}$	3 $\frac{3}{8}$	1	3 $\frac{1}{2}$	2 $\frac{1}{2}$	160
B	1 $\frac{3}{4}$	3 $\frac{3}{4}$	4 $\frac{3}{4}$	2 $\frac{3}{8}$	3 $\frac{5}{8}$	3	5	2 $\frac{1}{2}$	220
D	2	4	4 $\frac{15}{16}$	2 $\frac{15}{16}$	4 $\frac{13}{16}$	8	11	2 $\frac{1}{2}$	285



## EXPLOSION PROOF CIRCUIT BREAKER ENCLOSURES

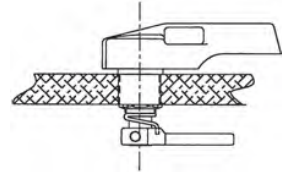


### Standard XBO Style

Spring loaded, compact design.

Easier to assemble and less expensive.

3/4" - 14 NPSM opening required for installation.



### Optional XCBH Style

"Classic" larger handle.

1" - 11 1/2" NPSM opening required for installation.

Optional XCBH style handle shown; standard handle is XBO.

## ENCLOSURE • FEATURES

- Housings are copper free aluminum alloy
- Furnished with stainless steel captive cover bolts
- For XCBA & XCBB hinge and mounting pan are optional, XCBC and larger are furnished with hinges
- Front mounted circuit breaker handle is padlockable in either "on" or "off" position

## CERTIFICATIONS

Class I, Groups B\*, C & D  
 Class II, Groups E, F & G  
 Class III

UL 1203  
 CSA C22.2 No. 25 & 30

Type 4, (w/N4 suffix)      UL 50

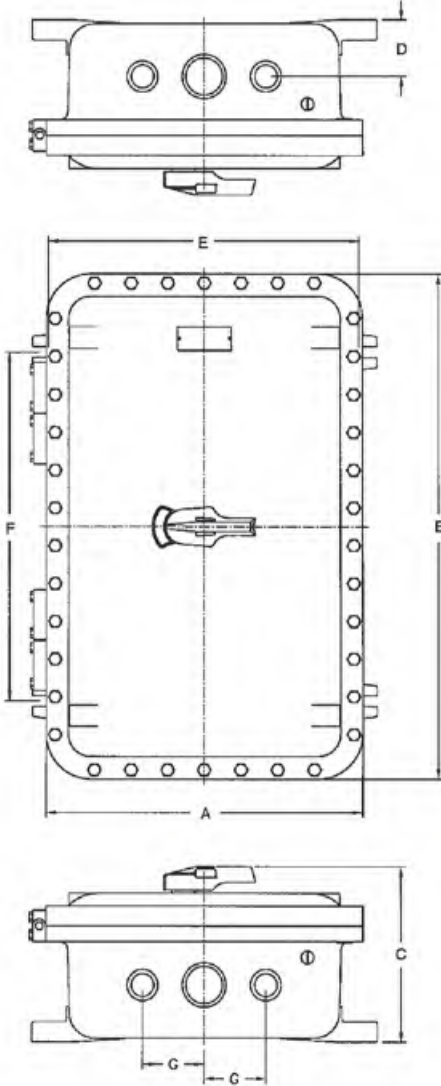
Type 4X (w/SS cover bolts)

\*Group C & D w/ N4 suffix

## BREAKER FRAME STYLES

- Cutler Hammer thermal magnetic type circuit breakers
- Frame sizes range from 15 to 600 amp as follows:
  - F Frame: 15 - 100 Amp Range
  - JD Frame: 70 - 250 Amp Range
  - KD Frame: 70 - 400 Amp Range
  - LD Frame: 125 - 600 Amp Range
- Short circuit and overload protection must be provided by a separate protection device
- Available with two pole or three pole breakers

## EXPLOSION PROOF CIRCUIT BREAKER ENCLOSURES



# ADALET

a Scott Fetzer company

### CIRCUIT BREAKER ENCLOSURE ONLY

Enclosure	Breaker Frame Size	Trip Range
XCBA-N4	100	15 - 70
XCBB-N4	100/150	80 - 150
XCBC-N4	225/250	70 - 250
XCBD-N4	400	250 - 400
XCBE-N4	600	400 - 800
*XCBF-N4	800	800 - 1200

\* Not a standard catalog item

All enclosures have a 1/2" NPT on top and bottom for installation of breather drain.

TO ORDER:

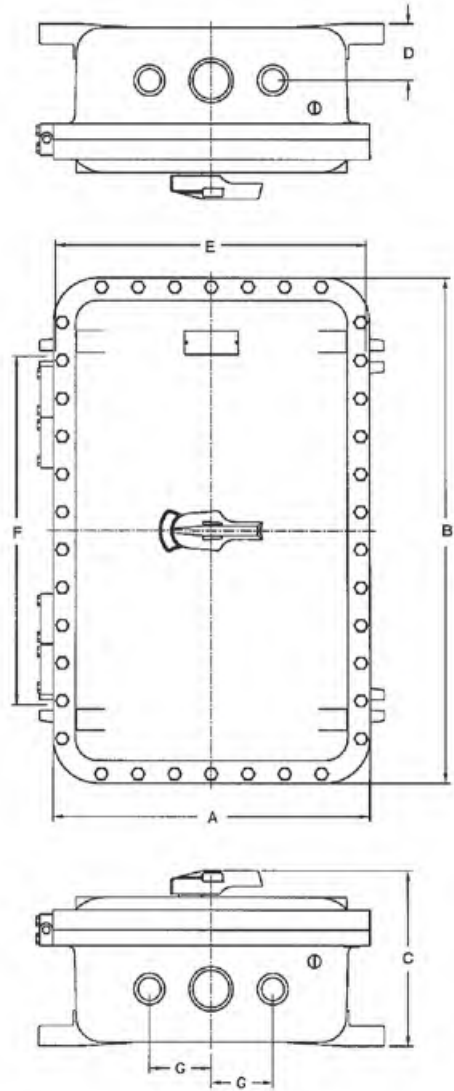
Specify breaker trip range for your application.

### ENCLOSURE DATA DIMENSIONS

Enclosure Part #	Inside Nom. Dimensions			Overall Dimensions			Mounting CL to CL		Mtg Bolt Size	Conduit Dimensions		Conduit	
	W	L	D	A	B	C	Lug E	Lug F		D	G	Size	# Holes
XCBA-N4	6	11	5	9 1/4	14 1/4	9	9 1/8	7 1/2	7/16"	2 1/2	—	1 1/4	1
XCBB-N4	6	13	5	9 1/4	16 1/4	9	9 1/8	8 1/2	3/8"	2 1/2	—	2	1
XCBC-N4	7	18	5	10 3/8	21 5/8	9	9 3/4	14 1/2	3/8"	2 3/4	—	2 1/2	1
XCBD-N4	12	20	5	16 1/4	24 1/4	10	15 3/4	14 3/8	1/2"	3 1/4	—	2 1/2	1
XCBE-N4	12	24	6	16 1/4	28 1/4	11	15 3/4	18 3/8	1/2"	3 5/8	2 7/8	3	2
XCBF-N4	12	36	8	16 1/4	40 1/4	13 1/2	15 3/4	29	5/8"	4 1/2	3 3/8	4	2

## FUSIBLE & NON-FUSED DISCONNECTS

### NEMA 7 DISCONNECTS



### FEATURES & OPTIONS

- Housings are copper free aluminum alloy with stainless steel captive cover bolts
- Front mounted XBO style handle, padlockable in either “on” or “off” position
- Cutler Hammer DS style toggle disconnects installed
- Fusible disconnects include (3) current limiting Class J fuses
- 400 and 600 amp range disconnects are available on special request
- Breather/Drains are added upon request for additional charge

### ENCLOSURE DATA DIMENSIONS

Disconnect Part #	Inside Nom. Dimensions			Overall Dimensions			Mounting CL to CL		Mtg Bolt Size	Conduit Dimensions		Conduit	
	W	L	D	A	B	C	Lug E	Lug F		D	G	Size	# Holes
XPND30 N4	6	11	5	9 1/4	14 1/4	9	9 1/8	7 1/2	7/16"	2 1/2	—	1 1/4	1
XPFD30 N4	6	11	5	9 1/4	14 1/4	9	9 1/8	7 1/2	7/16"	2 1/2	—	1 1/4	1
XPND60 N4	6	11	5	9 1/4	14 1/4	9	9 1/8	7 1/2	7/16"	2 1/2	—	1 1/4	1
XPFD60 N4	6	11	5	9 1/4	14 1/4	9	9 1/8	7 1/2	7/16"	2 1/2	—	1 1/4	1
XPND100 N4	6	13	5	9 1/4	16 1/4	9	9 1/8	8 1/2	3/8"	2 1/2	—	2	1
XPFD100 N4	6	13	5	9 1/4	16 1/4	9	9 1/8	8 1/2	3/8"	2 1/2	—	2	1
XPND200 N4	7	18	5	10 3/8	21 5/8	9	9 3/4	14 1/2	3/8"	2 3/4	—	2 1/2	1
XPFD200 N4	12	24	6	16 1/4	28 1/4	11	15 3/4	18 3/8	1/2"	3 5/8	2 7/8	3	2

# NEMA 4X DISCONNECTS



## FUSIBLE & NON-FUSED DISCONNECTS

### NEMA 4X DISCONNECTS



**ADALET**  
a Scott Fetzer company



#### FEATURES & OPTIONS

- Our disconnect switches are UL 98 rated and are fully assembled in a NEMA4X enclosure with a front operated padlockable handle.
- The enclosure is type 304 stainless steel with a #3 - #4 brushed finish, a continuous stainless steel piano hinge and clamping hardware. It is sealed with neoprene gasket for protection in wet environments.
- The enclosure is certified to UL50
- The switches are tested and approved for service entrance or main panel disconnects, and come standard with visible blade contacts.
- Fusible disconnects include (3) current limiting Class J fuses
- Larger amp range disconnect switches are available on special request

#### ENCLOSURE DATA DIMENSIONS

Disconnect Part #	Box Dimensions			Mtg Pan	Disconnect Ampere	Fuse Style
	W	L	D			
SSND30 N4	10	8	6	10P08	30	N/A
SSFD30 N4	10	8	6	10P08	30	Class J
SSND60 N4	10	8	6	10P08	60	N/A
SSFD60 N4	10	8	6	10P08	60	Class J
SSND100 N4	12	12	6	12P12	100	N/A
SSFD100 N4	12	12	6	12P12	100	Class J
SSND200 N4	12	12	6	12P12	200	N/A
SSFD200 N4	12	12	6	12P12	200	Class J

## FUSED & NON-FUSED DISCONNECT SWITCHES



**SOCOME C**  
NEMA 4X Fusible & Non-Fusible  
Disconnect Switches

#### APPROVALS

All switches meet the requirements of UL98  
Socomec also has the following approvals  
UL Listed - Guide WPZX - File E191605  
CSA C22.2 #4 Classs 4652 04, File 703166

IEC 947-3 - CE Mark



**CUTLER HAMMER**  
NEMA 7 Fusible & Non-Fusible  
Disconnect Switches



EXPLOSION PROOF MOTOR STARTERS

SIZING THE STARTER

STARTER SIZE	AMP RATING	Max. UL Horsepower			
		3-Phase			
		208V	240V	480V	600V
SIZE 00	9	1 1/2	1 1/2	2	2
SIZE 0	18	3	3	5	5
SIZE 1	27	7 1/2	7 1/2	10	10
SIZE 2	45	10	15	25	25
SIZE 3	90	25	30	50	50
SIZE 4	135	40	50	100	100
SIZE 5	270	75	100	200	200
SIZE 6	540	150	200	400	400

COMBINATION STARTERS

STARTER SIZE	STD. BREAKER FRAME SIZE	ENCLOSURE
SIZE 0	100	XCBSAQ-N4
SIZE 1	100	XCBSAQ-N4
SIZE 2	100	XCBSBQ-N4
SIZE 3	100	XCBSLQ-N4
SIZE 4	225/250	XCBSMQ-N4
SIZE 5	400	XCBSN-N4

CERTIFICATIONS

Class I, Groups B\*, C & D  
Class II, Groups E, F & G  
Class III

UL 1203  
CSA C22.2 No. 25 & 30

Type 4, (w/N4 suffix)

UL 50

Type 4X (w/SS cover bolts)

\*Group C & D w/ N4 suffix



COMBINATION STARTERS

Standard features include:

- Adjustable reset button
- Lockable cast aluminum breaker handle
- Two predrilled operator holes for pilot devices
- N4 gasket & captive stainless steel cover bolts

Options:

- Populated with either NEMA or IEC style components (NEMA - Cutler Hammer • IEC - Specher+Schuh)
- Type of auxillary device (Pg 17, 18 for options)
- Installation of auxillary devices
- Nameplates and contacts for auxillary devices
- Control transformer w/fuseblocks
- Overload heaters
- Internal control wiring
- Breather/Drain

ACROSS THE LINE

STARTER SIZE	ENCLOSURE
SIZE 0	XMSB-N4
SIZE 1	XMSB-N4
SIZE 2	XMSD-N4
SIZE 3	XMSH-N4
SIZE 4	XMSH-N4
SIZE 5	XMSQ-N4

ACROSS THE LINE STARTERS

Standard features include:

- Same features as combination starter except no breaker handle

Options:

- Same options available as combination starter except no breaker
- Populated with either NEMA or IEC style components (NEMA - Cutler Hammer • IEC - Specher+Schuh)

EXPLOSION PROOF MOTOR STARTERS

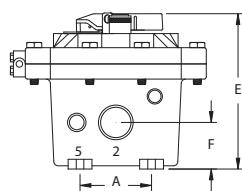
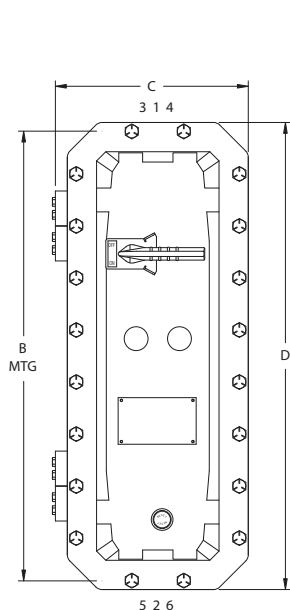


FIGURE A

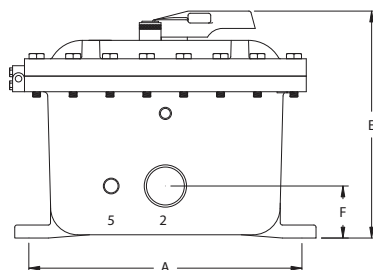
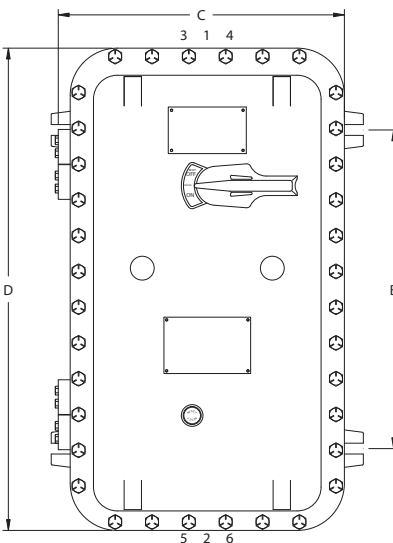


FIGURE B

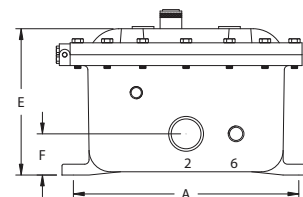
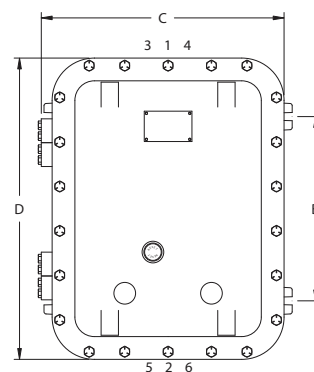


FIGURE C

DIMENSIONS FOR EXPLOSION PROOF MOTOR STARTERS

Enclosure	Fig #	Inside Nom. Dimensions			Nominal Dimensions in inches							Conduit Size
		W	L	D	A	B	C	D	E	F	G	
XCBSAQ-N4	A	6	23	5	4 1/8	25 1/2	11 1/8	26 15/16	9 11/16	2 1/2	3 & 5	1 1/2
XCBSBQ-N4	A	7	27	6	4 3/4	29 7/8	11 13/16	31 1/8	10 1/2	2 13/16	3 & 5	1 1/2
XCBSLQ-N4	B	12	24	8	15 3/4	18 3/8	16 15/16	28 1/4	12 15/16	3	3 & 5	2
XCBSMQ-N4	B	12	36	8	15 3/4	29	16 15/16	40 1/4	13 3/8	3 5/8	3 & 5	2 1/2
XCBSN-N4	B	16	46	10	19 3/4	39	21 3/4	50 7/8	16 7/16	4 7/8	3 & 5	4
XMSB	C	8	10	6	10 3/4	6 1/2	12	13 3/8	8 1/4	2 3/8	3 & 6	1
XMSD	C	10	14	6	13	10 5/8	14	17 3/8	8 3/8	2 3/4	3 & 6	1 1/2
XMSH	C	12	18	8	15 3/4	14 1/8	17	22 1/4	10 3/4	3 1/2	3 & 6	2 1/2
XMSQ	C	18	36	10	21 3/4	29	23 3/4	40 7/8	14 7/8	4 5/16	3 & 6	3

Our combination and across the line starters are available fully wired and assembled using your preference of NEMA or IEC style components.

Expedited services are available on some starters.



### EXPLOSION PROOF MANUAL MOTOR STARTER



#### MS 2000 • FEATURES & OPTIONS

##### FEATURES:

- Cutler Hammer Type XTPB Manual Starter
- Red and green pushbuttons for easy start/stop operation
- Watertight 'O' Ring for NEMA 4X applications

##### OPTIONS:

- Auxillary contacts
- Breather/Drain
- Shunt Trip

#### MS 2000 • CERTIFICATIONS

Class I, Groups C & D  
Class II, Groups E, F & G

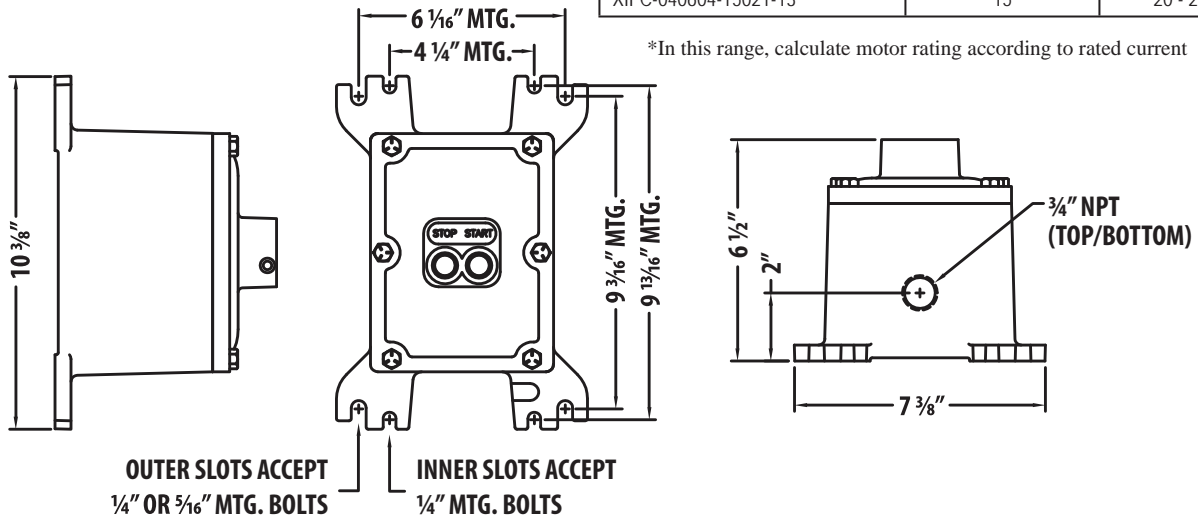
UL Standard 1203 (Classified)  
CSA Standard C22.2 No. 30  
NEMA 7CD, 9EFG



#### MS 2000 • STARTER RATING

CATALOG PART NUMBER	MAXIMUM UL HP 3-PHASE - 480V	CURRENT RANGE
XIFC-040604-15021-1	*	0.10 - 0.16
XIFC-040604-15021-2	*	0.16 - 0.25
XIFC-040604-15021-3	*	0.25 - 0.40
XIFC-040604-15021-4	1/2	0.40 - 0.63
XIFC-040604-15021-5	1/2	0.63 - 1
XIFC-040604-15021-6	3/4	1 - 1.6
XIFC-040604-15021-7	1	1.6 - 2.5
XIFC-040604-15021-8	2	2.5 - 4
XIFC-040604-15021-9	3	4 - 6.3
XIFC-040604-15021-10	7 1/2	6.3 - 10
XIFC-040604-15021-11	10	10 - 16
XIFC-040604-15021-12	10	16 - 20
XIFC-040604-15021-13	15	20 - 25

\*In this range, calculate motor rating according to rated current

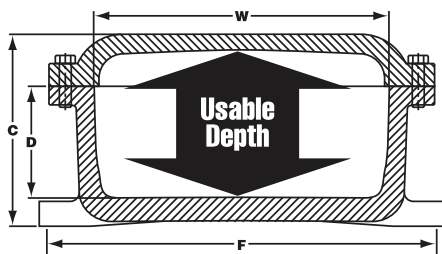
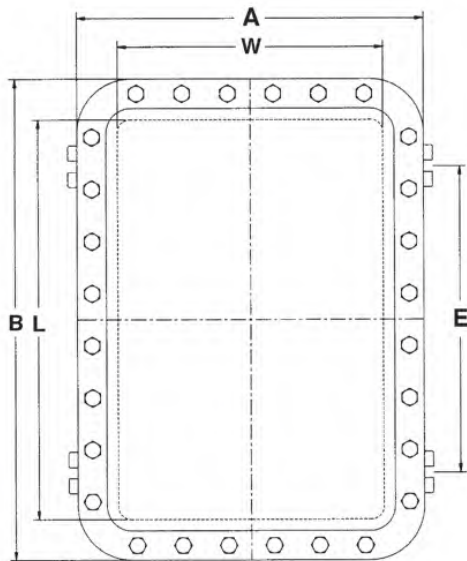


## EXPLOSION PROOF CONTROL ENCLOSURES



### XCE SERIES • FEATURES

- Copper free aluminum, lightweight & corrosion resistant
- Cast-on mounting lugs, slotted for ease of field installation
- High strength steel cover bolts, coated and plated for maximum corrosion resistance (stainless steel optional)
- An internal grounding screw is standard
- NEMA4 /IP66 - A machined groove in the cover flange has a nitrile o-ring to ensure a watertight seal
- Enclosures include a steel mounting pan and hinge set



### ENCLOSURE OPTIONS

The Adalet NEMA 7/9 XCE enclosures are used in the installation of electrical/electronic components for control, measurement and/or monitoring of applications in hazardous environments.

**At NEMA7, we specialize in modifying these enclosures to meet your requirements.**

Our on-site capabilities include conduit drilling and tapping, installation of glass viewing windows, as well as wiring and assembly of a variety of explosion proof operator devices based on your specifications.

In addition to the XCE series of explosion proof enclosures, the following enclosures are available:

- XCEX: Flame proof control enclosures
- XCEQ: Explosion proof quad-lead control enclosures



## Explosion Proof Control Enclosures

XCE Catalog #	Inside Nom. Dimensions			Usable Depth	Overall Dimensions			Mounting CL to CL		Mtg Bolt Size	Ship Weight lbs	Cover Wall Thickness
	W	L	D		A	B	C	Lug E	Lug F			
XCE41604N4	4	16	4	4 3/4	7 1/4	19 1/4	6	12 1/8	6 3/4	3/8"	25	1/2
XCE60804N4	6	8	4	4 5/8	9 1/4	11 1/4	5 15/16	4 1/2	9 1/8	3/8"	21	1/2
XCE60805N4	6	8	5	5 5/8	9 1/4	11 1/4	6 15/16	4 1/2	9 1/8	3/8"	23	1/2
XCE60806N4	6	8	6	6 5/8	9 1/4	11 1/4	7 15/16	4 1/2	9 1/8	3/8"	25	1/2
XCE61105N4	6	11	5	5 7/8	9 1/4	14 1/4	7 3/16	7 1/2	9 1/8	3/8"	24	1/2
XCE61204N4	6	12	4	4 3/4	9 1/4	15 1/4	6 1/16	8 1/2	9 1/8	3/8"	24	5/8
XCE61206N4	6	12	6	6 3/4	9 1/4	15 1/4	8 1/16	8 1/2	9 1/8	3/8"	29	5/8
XCE61305N4	6	13	5	5 7/8	9 1/4	16 1/4	7 3/16	9 1/2	9 1/8	3/8"	26	1/2
XCE71004N4	7	10	4	4 3/4	10 3/8	13 3/8	6 3/16	6 1/2	9 3/4	3/8"	27	5/8
XCE71006N4	7	10	6 1/8	6 3/4	10 3/8	13 3/8	8 3/16	6 1/2	9 3/4	3/8"	31	5/8
XCE71805N4	7	18 1/4	5	5 3/4	10 3/8	21 5/8	7 3/16	14 1/2	9 3/4	3/8"	55	5/8
XCE80804N4	8	8	4	4 13/16	11 3/8	11 3/8	6 3/8	4 1/4	11	3/8"	24	11/16
XCE80806N4	8	8	6	6 13/16	11 3/8	11 3/8	8 3/8	4 1/4	11	3/8"	28	11/16
XCE80808N4	8	8	8	8 13/16	11 3/8	11 3/8	10 3/8	4 1/4	11	3/8"	35	11/16
XCE81004N4	8	10	4	4 3/4	11 3/8	13 3/8	6 1/4	6 1/2	10 3/4	3/8"	30	11/16
XCE81006N4	8	10	6	6 3/4	11 3/8	13 3/8	8 1/4	6 1/2	10 3/4	3/8"	34	11/16
XCE81008N4	8	10	8	8 3/4	11 3/8	13 3/8	10 1/4	6 1/2	10 3/4	3/8"	39	11/16
XCE81204N4	8	12	4	4 3/4	11 3/8	15 3/8	6 1/4	8 1/2	10 3/4	3/8"	34	11/16
XCE81206N4	8	12	6	6 3/4	11 3/8	15 3/8	8 1/4	8 1/2	10 3/4	3/8"	42	11/16
XCE81208N4	8	12	8	8 3/4	11 3/8	15 3/8	10 1/4	8 1/2	10 3/4	3/8"	48	11/16
XCE91105N4	9	11	5	5 3/4	12 3/8	14 3/8	7 5/16	7 1/2	12	3/8"	41	11/16
XCE101004N4	10	10	4	4 3/4	13 3/8	13 3/8	6 5/16	6 1/2	13	3/8"	34	11/16
XCE101006N4	10	10	6	6 3/4	13 3/8	13 3/8	8 5/16	6 1/2	13	3/8"	44	11/16
XCE101008N4	10	10	8	8 3/4	13 3/8	13 3/8	10 5/16	6 1/2	13	3/8"	50	11/16
XCE101206N4	10	12	6 1/4	7 1/4	13 3/8	15 3/8	8 7/8	8 1/2	13	3/8"	46	3/4
XCE101404N4	10	14	4	4 3/4	13 3/8	17 3/8	6 7/16	10 5/8	13	3/8"	42	3/4
XCE101406N4	10	14	6	6 3/4	13 3/8	17 3/8	8 7/16	10 5/8	13	3/8"	49	3/4
XCE101408N4	10	14	8	8 3/4	13 3/8	17 3/8	10 1/2	10 5/8	13	1/2"	57	3/4
XCE121204N4	12	12	4	5	16 1/4	16 1/4	6 15/16	8 5/8	16	1/2"	60	7/8
XCE121206N4	12	12	6	7	16 1/4	16 1/4	8 15/16	8 5/8	16	1/2"	68	7/8
XCE121208N4	12	12	8	9	16 1/4	16 1/4	10 15/16	8 5/8	16	1/2"	80	7/8
XCE121804N4	12	18	4	4 3/4	16 1/4	22 1/4	6 3/4	14 1/8	16	1/2"	85	15/16
XCE121806N4	12	18	6	6 3/4	16 1/4	22 1/4	8 3/4	14 1/8	16	1/2"	93	15/16
XCE121808N4	12	18	8	8 3/4	16 1/4	22 1/4	10 3/4	14 1/8	16	1/2"	101	15/16
XCE122005N4	12	20	5	5 3/4	16 1/4	24 1/4	8 1/8	14 3/8	16	1/2"	104	1 1/8
XCE122406N4	12	24	6	6 15/16	16 1/4	28 1/4	9 1/4	18 3/8	16	1/2"	127	1 1/8
XCE122408N4	12	24	8	8 15/16	16 1/4	28 1/4	11 1/4	18 3/8	16	1/2"	142	1 1/8
XCE122410N4	12	24	10	10 15/16	16 1/4	28 1/4	13 1/4	18 3/8	16	1/2"	154	1 1/8
XCE123006N4	12	30	6	6 11/16	16 3/4	34 1/4	9 5/8	23	16	1/2"	180	1 3/8
XCE123606N4	12	36	6	6 15/16	16 1/4	40 1/4	9 11/16	29	16	1/2"	212	1 3/16
XCE123608N4	12	36	8	8 15/16	16 1/4	40 1/4	11 11/16	29	16	1/2"	232	1 3/16

## Explosion Proof Control Enclosures

XCE Catalog #	Inside Nom. Dimensions			Usable Depth	Overall Dimensions			Mounting CL to CL		Mtg Bolt Size	Ship Weight lbs	Cover Wall Thickness
	W	L	D		A	B	C	Lug E	Lug F			
XCE124608N4	12	46	8	8 15/16	16 1/4	50 1/4	11 11/16	39	16	5/8"	280	1 1/4
XCE141404N4	14	14	4	5	18 1/4	18 1/4	7 1/8	9 3/4	17 3/4	1/2"	91	7/8
XCE141406N4	14	14	6	7	18 1/4	18 1/4	9 1/4	9 3/4	17 3/4	1/2"	97	7/8
XCE141408N4	14	14	8	9	18 1/4	18 1/4	11 1/8	9 3/4	17 3/4	1/2"	103	7/8
XCE142210N4	14	22	10	11 1/4	18 1/4	26 1/4	13 5/8	16 1/2	17 3/4	1/2"	181	1 1/8
XCE142213N4	14	22	10	13	18 1/4	26 1/4	15 1/8	16 1/2	17 3/4	1/2"	235	1 1/8
XCE142806N4	14	28	6	7 13/16	18 1/4	32 1/4	9 9/16	22 1/2	17 3/4	1/2"	120	1 1/8
XCE161606N4	16	16	6	7 5/8	20 7/8	20 7/8	9 15/16	11	19 3/4	5/8"	135	7/8
XCE161608N4	16	16	8	9 5/8	20 7/8	20 7/8	11 15/16	11	19 3/4	5/8"	156	7/8
XCE162406N4	16	24	6	7 13/16	20 7/8	28 7/8	10 3/8	18 3/8	19 3/4	5/8"	190	7/8
XCE162408N4	16	24	8	9 13/16	20 7/8	28 7/8	12 3/8	18 3/8	19 3/4	5/8"	209	7/8
XCE162410N4	16	24	10	11 13/16	20 7/8	28 7/8	14 3/8	18 3/8	19 3/4	5/8"	225	7/8
XCE162806N4	16	28	6	6 13/16	20 1/2	32 11/16	9 1/2	22 1/2	19 3/4	5/8"	200	1 1/4
XCE163406N4	16	34	6	6 15/16	20 1/2	38 1/2	9 1/2	27	19 3/4	5/8"	260	1 1/4
XCE164610N4	16	46	10	11 13/16	20 7/8	50 7/8	14 9/16	39	19 3/4	5/8"	390	1
XCE181804N4	18	18	4	5 13/16	22 7/8	22 7/8	8 1/2	13	21 3/4	5/8"	154	1
XCE181806N4	18	18	6	7 13/16	22 7/8	22 7/8	10 1/2	13	21 3/4	5/8"	177	1
XCE181808N4	18	18	8	9 13/16	22 7/8	22 7/8	12 1/2	13	21 3/4	5/8"	200	1
XCE182406N4	18	24	6	7 7/16	22 7/8	28 7/8	10 13/16	18 3/8	21 3/4	5/8"	226	1 1/2
XCE182408N4	18	24	8	9 7/16	22 7/8	28 7/8	12 13/16	18 3/8	21 3/4	5/8"	239	1 1/2
XCE182410N4	18	24	10	11 7/16	22 7/8	28 7/8	14 13/16	18 3/8	21 3/4	5/8"	260	1 1/2
XCE183008N4	18	30	8	9 3/8	22 7/8	34 7/8	12 13/16	23	21 3/4	5/8"	293	1 1/2
XCE183608N4	18	36	8	9 3/8	22 7/8	40 7/8	12 7/8	29	21 3/4	5/8"	318	1 7/8
XCE183610N4	18	36	10	11 3/8	22 7/8	40 7/8	14 7/8	29	21 3/4	5/8"	340	1 7/8
XCE204806N4	20	48	6	7 1/8	24 7/8	52 7/8	10 7/8	41	24	5/8"	430	1 7/8
XCE242408N4	24	24	8	9 7/16	28 7/8	28 7/8	12 7/16	18 3/8	28	5/8"	302	1 1/2
XCE242410N4	24	24	10	11 7/16	28 7/8	28 7/8	14 7/16	18 3/8	28	5/8"	330	1 1/2
XCE243008N4	24	30	8	9 1/4	28 7/8	34 7/8	12 15/16	23	28	5/8"	356	1 7/8
XCE243608N4	24	36	8	9 1/4	28 7/8	40 7/8	12 7/16	29	28	5/8"	408	1 7/8
XCE243610N4	24	36	10	11 1/4	28 7/8	40 7/8	14 7/8	29	28	5/8"	433	1 7/8
XCE323612N4	32	36	12	12	37 3/4	41 3/4	15 1/2	29	36 1/8	5/8"	691	Factory

## MOUNTING PANS & HINGES

- All enclosures include a steel mounting pan and hinge set
- Mounting pans are constructed of 12 gauge galvanized steel and include 1/4" high spacers and stainless steel mounting screws
- Hinge sets are made of an extruded aluminum alloy and consist of two sections: female and male with a stainless steel pin and four stainless steel hex head bolts
- Hinge sets are designed to allow right or left hand removeable and nonremovable installation. They are factory installed on the left side of the enclosure.
- Modification to standard hinge location is available for an additional charge



### XCE SERIES • CERTIFICATIONS

Class I, Groups B, C & D  
 Class II, Groups E, F & G  
 Class III

UL 1203  
 CSA C22.2 No. 25 & 30

Type 4, (w/N4 suffix)

UL 50

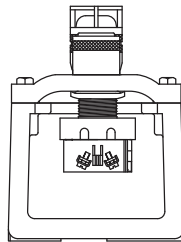
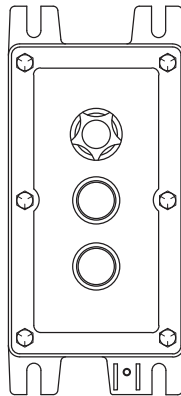


Type 4X (w/SS cover bolts)

**ADALET**  
 a Scott Fetzer company

For over 40 years we've specialized in providing value added products and services on electrical equipment for the most demanding of applications and environments.

### NEMA 7 CONTROL STATIONS



Catalog Number	Nominal Inside Dimensions	Dimensions		Number Operators	Std. Conduit Size (in.)
		A	B		
X1	030303	4 1/2	5 1/2	1	3/4
X2	030603	7 1/16	8	2	3/4
X3	030703	8 1/8	9	3	3/4
X4	030903	10 1/16	11	4	1
X5	031103	12 1/16	13	5	1 1/4
X6	031303	14 1/16	15	6	1 1/4
X7	031503	16	17	7	1 1/4
X8	031803	19	20	8	1 1/4
X12	032403	25 1/16	26	12	1 1/2
X15	033003	31 1/8	32 1/8	15	1 1/2
X18	033603	37 1/4	38 1/8	18	1 1/2

### FEATURES & CERTIFICATIONS

- Lightweight, copper free aluminum, corrosion resistant
- Operators may be mounted through back wall for panel mounting
- For NEMA 4X or special machining see XIFC series
- Box depth allows stacking of 2 contact blocks

Class I, Groups C & D  
 Class II, Groups E, F & G  
 UL: Standard 698  
 CSA Standard C22.2 No. 30  
 (CSA certification requires guarded pilot lights)

## NEMA 7 CONTROL ENCLOSURES



### FEATURES & CERTIFICATIONS

- Copper free aluminum, lightweight & corrosion resistant
- Available with steel mounting pan (additional charge)
- Available with NEMA 4 "O" Ring (additional charge)
- Flameproof Enclosure with ATEX rating available

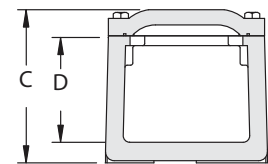
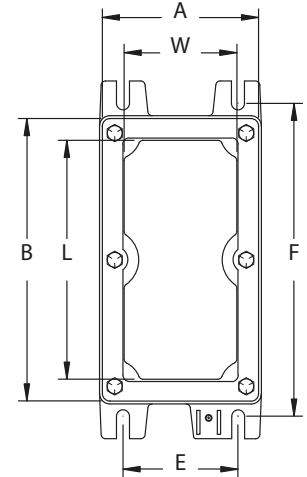
Class I, Groups B, C & D  
Class II, Groups E, F & G  
Class III

UL 1203

CSA C22.2 No. 25 &30

Type 4, (w/N4 suffix)

UL 50



### NEMA 7 CONTROL ENCLOSURES

XCE Catalog	Inside Nom. Dimensions			Overall Dimensions			Mounting CL to CL		Mtg Bolt Size
	W	L	D	A	B	C	Lug E	Lug F	
XIFC030303	3 5/16	3 5/16	3 3/16	4 1/2	4 1/2	4 5/16	3 1/4	5 1/2	5/16
XIFC030603	3 1/4	5 3/4	3	4 1/2	7 1/16	4 1/4	3 1/4	8	5/16
XIFC030703	3 1/4	6 7/8	3	4 1/2	8 1/8	4 5/16	3 5/16	9	5/16
XIFC030903	3 11/32	8 15/16	3	4 1/2	10 1/16	4 5/16	3 1/4	11	5/16
XIFC031103	3 1/4	10 15/16	3	4 1/2	12	4 5/16	3 1/4	13	5/16
XIFC031303	3 1/4	12 13/16	3	4 1/2	14 1/16	4 5/16	3 1/4	15	5/16
XIFC031503	3 1/4	14 3/4	3 1/16	4 1/2	16	4 5/16	3 1/4	17	5/16
XIFC031803	3 1/4	17 3/4	3	4 1/2	19	4 1/4	3 1/4	20	5/16
XIFC032403	3 1/4	23 9/16	3	4 1/2	25 1/16	4 5/16	3 1/4	26	5/16
XIFC033003	3 1/4	29 1/2	3	4 9/16	31 1/16	4 5/16	3 1/4	32 1/8	5/16
XIFC033603	3 1/4	35 7/16	3	4 1/2	37 1/4	4 3/8	3 1/4	38 1/8	5/16
XIFC040604	4 1/8	5 7/8	4	5 3/8	7	5 5/16	4 3/8	8 1/4	5/16
XIFC041204	4 1/4	11 13/16	4	5 1/2	13 1/8	5 5/16	4 3/8	14 1/4	5/16
XIFC060606	5 1/2	5 1/2	6	7	7	7 3/8	5 1/2	8 1/2	3/8
XIFC060608	5 1/4	5 1/2	8	7	7	9 3/8	5 1/2	8 1/2	3/8
XIFC061206	5 1/4	11 1/8	6	7 1/4	13 1/2	7 5/8	5 1/2	15	3/8
XIFC070704	6 7/8	6 7/8	4	7 15/16	7 15/16	5 5/16	6 5/8	9 1/8	3/8



## NEMA 7 PILOT LIGHTS

Catalog Number	Lens Color	Operator Description
XLA	Amber	Unguarded Pilot Light - Panel Mount
XLSA	Amber	Unguarded Pilot Light - Surface Mount
XLA-GH	Amber	Guarded Pilot Light - Panel Mount
XLSA-GH	Amber	Guarded Pilot Light - Surface Mount
XLB	Blue	Unguarded Pilot Light - Panel Mount
XLSB	Blue	Unguarded Pilot Light - Surface Mount
XLB-GH	Blue	Guarded Pilot Light - Panel Mount
XLSB-GH	Blue	Guarded Pilot Light - Surface Mount
XLC	Clear	Unguarded Pilot Light - Panel Mount
XLSC	Clear	Unguarded Pilot Light - Surface Mount
XLC-GH	Clear	Guarded Pilot Light - Panel Mount
XLSC-GH	Clear	Guarded Pilot Light - Surface Mount
XLG	Green	Unguarded Pilot Light - Panel Mount
XLSG	Green	Unguarded Pilot Light - Surface Mount
XLG-GH	Green	Guarded Pilot Light - Panel Mount
XLSG-GH	Green	Guarded Pilot Light - Surface Mount
XLR	Red	Unguarded Pilot Light - Panel Mount
XLSR	Red	Unguarded Pilot Light - Surface Mount
XLR-GH	Red	Guarded Pilot Light - Panel Mount
XLSR-GH	Red	Guarded Pilot Light - Surface Mount
XLW	White	Unguarded Pilot Light - Panel Mount
XLSW	White	Unguarded Pilot Light - Surface Mount
XLW-GH	White	Guarded Pilot Light - Panel Mount
XLSW-GH	White	Guarded Pilot Light - Surface Mount

- All pilot lights have 8" leads
- Group B applications must use guarded pilot lights
- Equipped with 6 watt, 120 volt, 6S6 clear lamps
- Alternate lamp voltages available upon request



## NEMA 7 PUSH BUTTONS

Catalog Number	Operator Description	Contact Blocks
XHPB	Panel Mount Push Button	Not Included
XHPBS	Surface Mount Push Button	Not Included
XHPBM	Momentary Stop - Panel Mount - Red Mushroom Head	Not Included
XHPBMS	Momentary Stop - Surface Mount - Red Mushroom Head	Not Included
XHPBPL	Panel Mount Push Button - Padlock Devices	Not Included
XHPBSPL	Surface Mount Push Button - Padlock Devices	Not Included
XHPPM	Maintained Stop - Panel Mount - Red Mushroom Head	Included
XHPPMS	Maintained Stop - Surface Mount - Red Mushroom Head	Included

### PUSHBUTTON FEATURES

- XHPB are momentary pushbuttons
- XHPP are maintained pushbuttons
- Rated for Class I, Groups B, C & D
- Rated for Class II, Groups E, F & G
- Legend plates are available with markings for various applications
- Protective boots are available for the XHPB & XHPBS

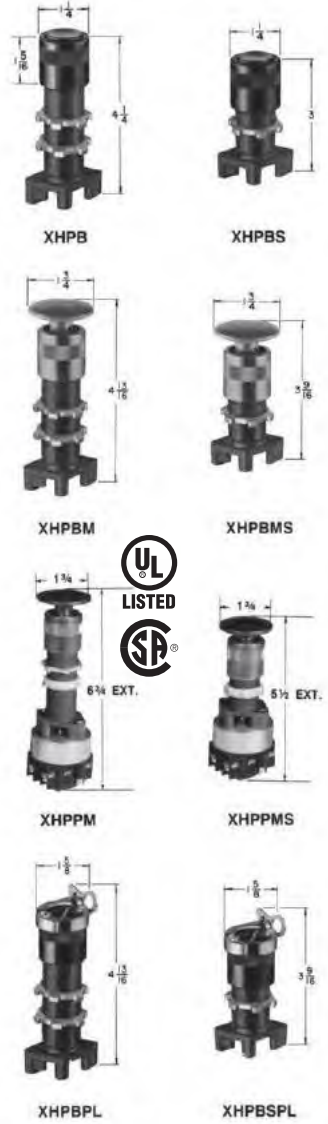
### OPERATOR SHANK SIZE

Panel mount operators have longer shanks. They are to be used in enclosures that have a cover wall thickness of greater than 7/8".

Surface mount operators have shorter shanks and are designed for enclosures with a cover wall thickness of 7/8" or less.

Use the tables on pages 12 & 13 to determine the cover wall thickness of enclosures.

**ADALET**  
a Scott Fetzer company



## NEMA 7 SELECTOR SWITCHES

### BT Series Contact Blocks



- Can be stacked for up to (4) multiple circuits
- Contacts extend 7/8" beyond operator

### BT Series Contact Blocks

BT 1A	(1) Open (1) Closed
BT1B	(1) Closed (1) Open
BT2	(2) Open
BT3	(2) Closed
BT4	(1) Open
BT5	(1) Closed
BT44	(2) Open (2) Closed

Catalog Number	Operator Description	Cam	# of SS Positions
XHSS	Panel Mount		2/3
XHSSS	Surface Mount		2/3
XHSC	Panel Mount		3
XHSSC	Surface Mount		3
XHSR2	Panel Mount	2	2
XHSSR2	Surface Mount	2	2
XHSR	Panel Mount		3
XHSSR	Surface Mount		3
XHSL2	Panel Mount	4	2
XHSSL2	Surface Mount	4	2
XHSL	Panel Mount		3
XHSSL	Surface Mount		3
XHSSPL	Panel Mount w/padlock device		
XHSSSPL	Surface Mount w/padlock device		
XHSSL-4P	Panel Mount		4
XHSSS-4P	Surface Mount		4
XHSSL-5P	Panel Mount		5
XHSSS-5P	Surface Mount		5

- Die cast aluminum alloy. Barrels are 3/4" NPSM thread
- Specify 2 or 3 position - For 3 position specify CAM
- Contact blocks are not included with operators (See below)
- All operators have black molded nylon knobs
- Protective boots and legend plates are available



**ADALET**  
a Scott Fetzer company

### CONTACT SEQUENCE CHART

Circuit of Contact Block	Contact Block Number	Circuit	Cam 1 Contact Sequence	Cam 2 Contact Sequence	Cam 3 Contact Sequence	Cam 4 Contact Sequence	Cam 5 Contact Sequence	Cam 6 Contact Sequence
O = Contact Open X = Contact Closed								
Normally Closed (NC) Normally Open (NO)	BT1A	Circuit A Circuit B	XO OX	OXO OOX	OXX OOX	XOO OXO	OXX XOX	XOO OXO
Normally Closed (NC) Normally Open (NO)	BT1B	Circuit B Circuit A	XO OX	XXO XOX	XXO XOO	XOX OXX	OOX XOO	OOX OOX
Normally Open (NO) Normally Open (NO)	BT2	Circuit A Circuit B	OX OX	XOX OOX	XOO OOX	OXX OXO	XOO XOX	OOX OXO
Normally Closed (NC) Normally Closed (NC)	BT3	Circuit A Circuit B	XO XO	OXO XXO	OXX XOX	XOO XOX	OXX OOX	XOO OXO

**FLEXIBLE COUPLINGS FEATURES**

- All sizes are constructed from bronze braided brass tubing and have an arc resistant liner.
- They are assembled with two female threaded end fittings and two male nipples.
- Custom lengths are available on special request.
- To order with a union add a "U" to the part number. (i.e. FC-14 becomes FCU-14)



**APPLICATIONS**

For use in hazardous areas where movement or vibration requires a flexible connection or a difficult bend is required in a conduit system.

**SPECIFICATIONS**

NEMA7 Flex Couplings are UL listed for use in the following hazardous areas:

1/2", 3/4"

- Class I Groups A, B, C, D
- Class II Groups E, F, G

1", 1-1/2", 2"

- Class I Groups C, D
- Class II Groups E, F, G

1-1/4"

- Class I Group D
- Class II Groups E, F, G

**DIMENSIONS**



• Flexible length does not include fittings

Catalog Number	Conduit Size	Flexible Length	Dim. A	Dim. B
FC-14	1/2"	4"	1.54	1.44
FC-16	1/2"	6"	1.54	1.44
FC-18	1/2"	8"	1.54	1.44
FC-110	1/2"	10"	1.54	1.44
FC-112	1/2"	12"	1.54	1.44
FC-115	1/2"	15"	1.54	1.44
FC-118	1/2"	18"	1.54	1.44
FC-121	1/2"	21"	1.54	1.44
FC-124	1/2"	24"	1.54	1.44
FC-127	1/2"	27"	1.54	1.44
FC-130	1/2"	30"	1.54	1.44
FC-133	1/2"	33"	1.54	1.44
FC-136	1/2"	36"	1.54	1.44
FC-24	3/4"	4"	1.6	1.87
FC-26	3/4"	6"	1.6	1.87
FC-28	3/4"	8"	1.6	1.87
FC-210	3/4"	10"	1.6	1.87
FC-212	3/4"	12"	1.6	1.87
FC-215	3/4"	15"	1.6	1.87
FC-218	3/4"	18"	1.6	1.87
FC-221	3/4"	21"	1.6	1.87
FC-224	3/4"	24"	1.6	1.87
FC-227	3/4"	27"	1.6	1.87
FC-230	3/4"	30"	1.6	1.87
FC-233	3/4"	33"	1.6	1.87
FC-236	3/4"	36"	1.6	1.87
FC-36	1"	6"	2	2.31
FC-38	1"	8"	2	2.31
FC-310	1"	10"	2	2.31
FC-312	1"	12"	2	2.31
FC-315	1"	15"	2	2.31
FC-318	1"	18"	2	2.31
FC-321	1"	21"	2	2.31

Catalog Number	Conduit Size	Flexible Length	Dim. A	Dim. B
FC-324	1"	24"	2	2.31
FC-327	1"	27"	2	2.31
FC-330	1"	30"	2	2.31
FC-333	1"	33"	2	2.31
FC-336	1"	36"	2	2.31
FC-412	1-1/4"	12"	2.12	2.74
FC-415	1-1/4"	15"	2.12	2.74
FC-418	1-1/4"	18"	2.12	2.74
FC-421	1-1/4"	21"	2.12	2.74
FC-424	1-1/4"	24"	2.12	2.74
FC-427	1-1/4"	27"	2.12	2.74
FC-430	1-1/4"	30"	2.12	2.74
FC-433	1-1/4"	33"	2.12	2.74
FC-436	1-1/4"	36"	2.12	2.74
FC-512	1-1/2"	12"	2.37	3.61
FC-515	1-1/2"	15"	2.37	3.61
FC-518	1-1/2"	18"	2.37	3.61
FC-521	1-1/2"	21"	2.37	3.61
FC-524	1-1/2"	24"	2.37	3.61
FC-527	1-1/2"	27"	2.37	3.61
FC-530	1-1/2"	30"	2.37	3.61
FC-533	1-1/2"	33"	2.37	3.61
FC-536	1-1/2"	36"	2.37	3.61
FC-612	2"	12"	2.41	4.33
FC-615	2"	15"	2.41	4.33
FC-618	2"	18"	2.41	4.33
FC-621	2"	21"	2.41	4.33
FC-624	2"	24"	2.41	4.33
FC-627	2"	27"	2.41	4.33
FC-630	2"	30"	2.41	4.33
FC-633	2"	33"	2.41	4.33
FC-636	2"	36"	2.41	4.33

# EXPLOSION PROOF FITTINGS



## EXPLOSION PROOF UNIONS

<b>Application</b>	For use in hazardous locations
<b>Thread</b>	NPT Female
<b>Material</b>	Steel
<b>Area</b>	Class I, Group A, B, C, D · Class II, Group E, F, G



Catalog Number	Thread Size	Dim. A	Dim. B
UNF-50	1/2"	1.78	1.53
UNF-75	3/4"	1.80	1.78
UNF-100	1"	2.03	2.01

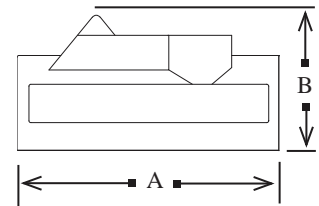
## EXPLOSION PROOF SEAL FITTINGS

<b>Application</b>	Sealing fittings prevent passage of gases, vapor or flames from one portion of a conduit system to another. The seal must be placed in each conduit within 3" of the device that may produce arcs or sparks.
<b>Thread</b>	NPT Female
<b>Material</b>	Malleable Iron
<b>Area</b>	Class I, Group A, B, C, D · Class II, Group E, F, G
<b>Features</b>	Used for sealing vertical or horizontal conduit runs.
<b>Requirements</b>	Sealing Compound: 1/2" = 1 oz. · 3/4" = 2 oz. · 1" = 3 oz.
<b>Note</b>	Seal fittings are approved for hazardous location only if fiber and sealing compound are used to make the seal.



Catalog Number	Thread Size	Dim. A	Dim. B
EYA-50	1/2"	3.75	1.68
EYA-75	3/4"	3.75	1.90
EYA-100	1"	4.38	2.25

\*Male nipple not included with fitting.



## SEALING COMPOUND

<b>Application</b>	The powder is an insulating compound contained in a polyethylene bag within the outer container. It is not affected by gasoline, alcohol, oils or lacquer solvents. To mix, remove the bag of powder, fill the container with water to the "water line" and pour in the powder.
--------------------	--



Catalog Number	Description	Std. Pkg	Availability
XSC 8	8 oz. Tub	1	Stock

## PACKING FIBER · NON-ASBESTOS

<b>Application</b>	Ceramic fiber is used to make a dam in the space between the integral bushing of the seal fitting hub, the conduit end and around the electrical conductors prior to pouring compound.
--------------------	--



Catalog Number	Description	Std. Pkg	Availability
XAF 64	1 LB	1	Stock
XAF 64-1	1 OZ	1	Stock



## OUR CAPABILITIES

### TEAMWORK

Our approach to customization is simple; we believe that the best results are achieved through a teamwork strategy tailoring our services to meet our customers' requirements.

We have an established network of key vendors who work with us to develop competitive solutions for our control products, and we couple that network with forty years of experience building electrical assemblies. This guarantees a reliable finished product that can be incorporated into your manufacturing process.

By working together, we enable you to concentrate your resources toward an end product, helping you to reduce labor costs while increasing your bottom line. That's teamwork.

### COMMITMENT



We're committed to providing quality electrical products that meet the highest NEMA & IEC standards. Our panel shop is certified for building UL-CUL 508A panels and we also maintain an ISO 9001:2000 management system that helps to ensure we continue to review and improve our operational procedures.

### EXPERIENCE

For over 40 years we've specialized in providing value added products and services on electrical equipment for the most demanding of applications and environments.



From purge systems and PLC or GUI panels, to electrical control systems for industries as diverse as pharmaceutical, petrochemical, food processing and wastewater; we strive to provide cost effective and dependable assembly services that fit your budget and meet your delivery requirements.



## Factory-Sealed Panelboards



Factory-sealed. No External Seals Required.

Fully-Wired from Panelboard Enclosure to Terminal Enclosure.

External Operating Handles Can Be Padlocked Either in "ON" or "OFF" Position.

Spring-Loaded Operator Handles Allow Cover to Close with Handles in Any Position.

Copper Bus is Standard.

Isolated Neutral and Ground Bar Provided

Available with GFI or EPD Breaker

Type 4/IP66 Gasketing Provided for Water & Dust Tight Seal.

Breather & Drain Provided for Each Enclosure

Removable Gland Plates for Field Installation of Conduit Entries

Utilizing electrical components from Cutler Hammer, the Adalet factory-sealed panelboards are pre-wired from the circuit breakers inside the flameproof enclosure to the main distribution blocks and branch terminals housed in an IP66 rated, Type 4x stainless steel increased safety terminal enclosure. The factory seal between the breaker enclosure and terminal enclosure eliminates the need for external sealing.

All Adalet factory-sealed panelboards are equipped with padlockable external operating handles, copper bus, isolated neutral and ground bar, GFI or EPD breakers and terminal blocks. Gasket covers provide IP66 and NEMA 4/4X rated protection for a water tight seal and stainless steel cover bolts, removable hinges and breather/drain are included as standard features.

Turnkey Switchrack Assemblies for Industrial and Hazardous Locations



## Switchracks

Equipment racks with NEMA 4/4X & NEMA 7/9 Explosion Proof Classified Enclosures

### Features:

- Wide variety of explosion proof motor control assemblies and panelboards
- Rugged frame and canopy design provide heavy duty protection and construction.
- Single or double-sided assemblies are available in single or double rows.
- Pre-drilled bus boxes provide easy-access changes and upgrades
- Premium, high-strength stainless steel cover bolts
- Standard drawings of complete switchrack design provides detail on all enclosures, frame, canopy and wiring.

### Materials:

- All welded construction – sheet aluminum, stainless steel or sheet metal.
- Rack Frame – hot dipped galvanized, structural steel
- Optional corrosion resistant primer and epoxy coating

### Certifications

- Class 1, Division 1, Gas Groups B, C, D
- Class II, Division 2, Gas Groups E, F, G
- Class III
- Nema 4, 4X, 7BCD, 9 EFG





Our panel shop is certified to build UL-CUL 508A panels and we maintain a staff of dedicated and qualified technicians who are committed to providing quality electrical products that meet the highest NEMA & IEC standards.

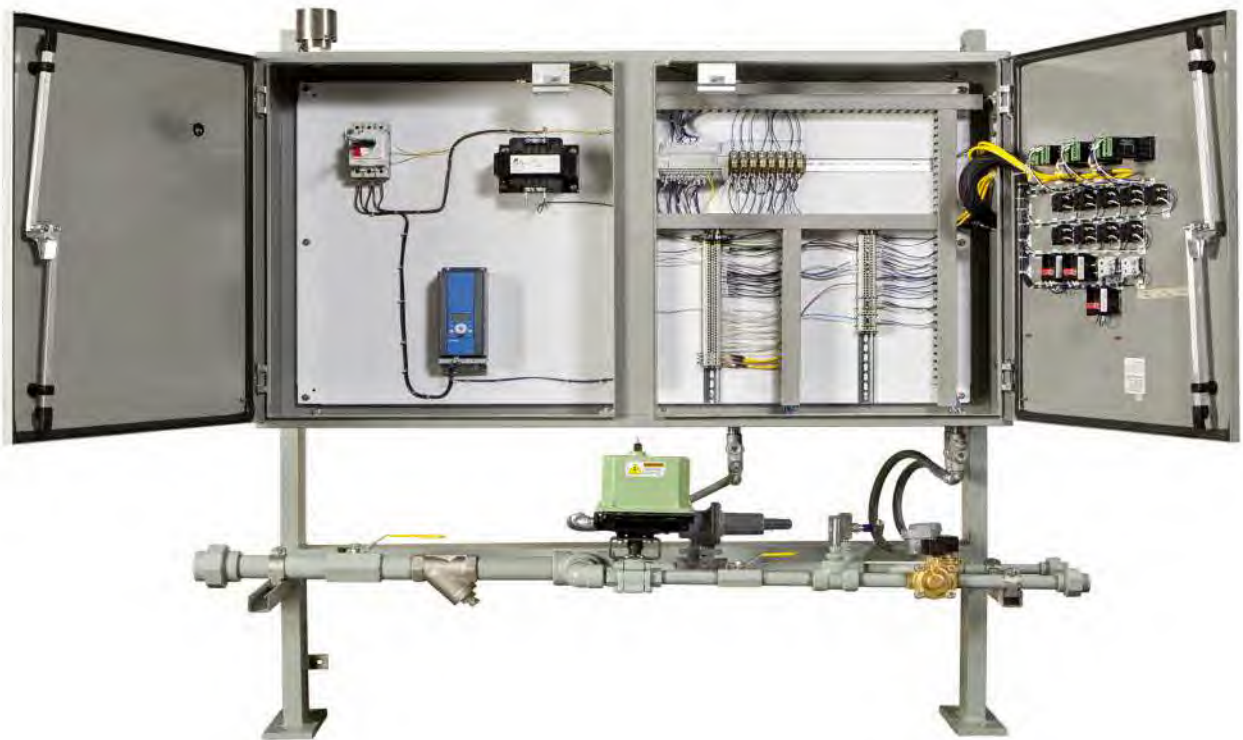


Over the past 40 years we've established a reputation of providing a high quality end product and a delivery time that is the best in the industry. Our on-site machine shop is equipped to handle a wide variety of value-added services for our products.





**ELECTRICAL CONTROL POL PANELS & EQUIPMENT FOR FOR ALL ALL TYPES OF ENVIRONMENTS**



**4237 S. 74TH E. AVENUE · TULSA OK · 74145**

**WWW.NEMA7.COM**

**918.665.6888**