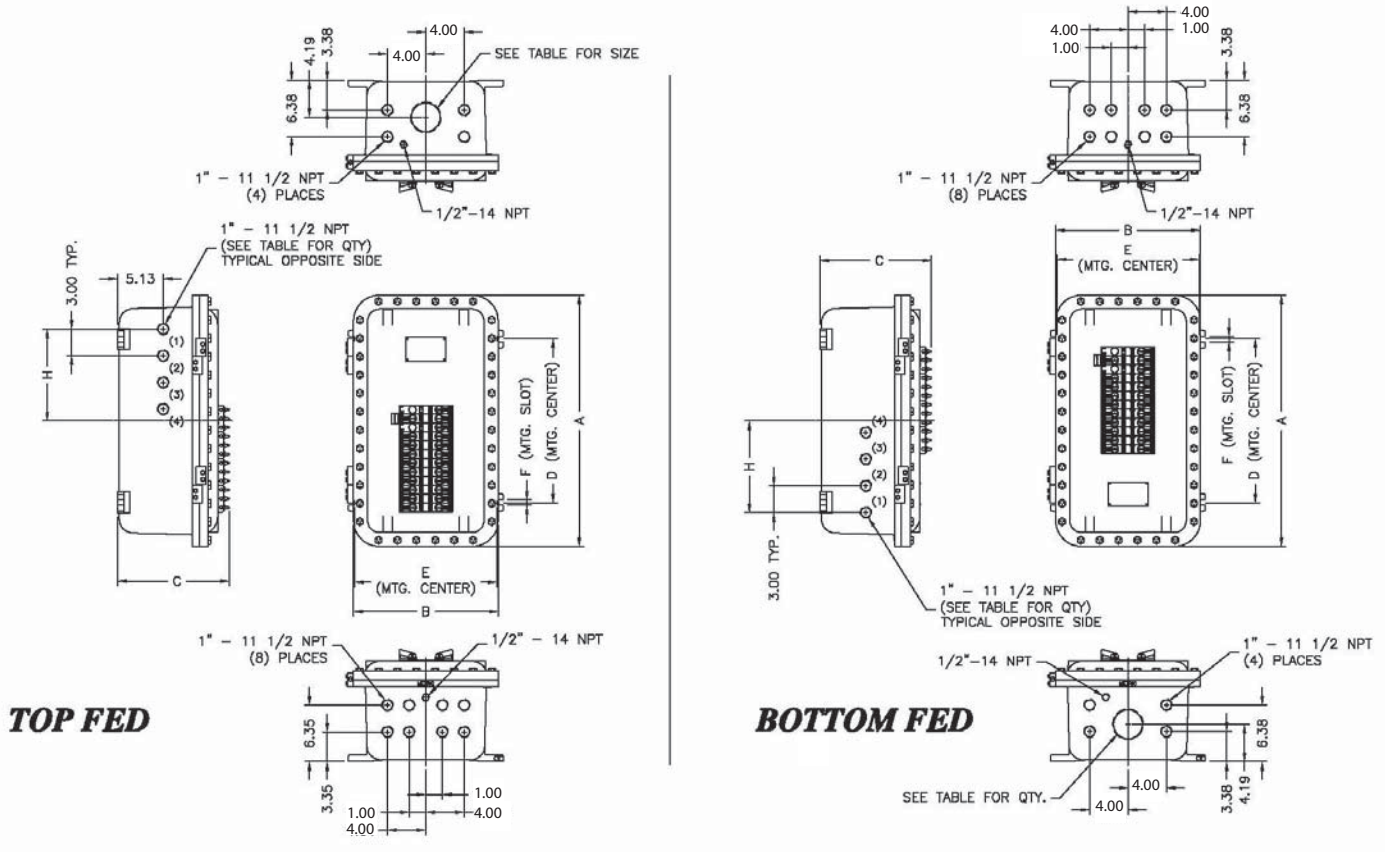


PANELBOARDS

Explosionproof Panelboards Back Fed Main Breaker

EXPLOSIONPROOF
Panelboards



CERTIFICATIONS

Class I, Groups B, C, D
 Class II, Groups F & G
 Class III
 Class I, Zone 1, AE x d IIB
 Ex d IIB+H₂
 Type 4X, 7, 9
 IP66



DIMENSIONAL OUTLINE

Catalog #	A	B	C	D	E	F	MAIN CONDUIT FED SIZE	H	LEFT & RIGHT SIDE HOLE LOCATIONS AND QTY'S	XP ENCLOSURE
X1PB1-121-B1_	22.25	16.25	12.03	14.13	15.75	.50	2"	7.00	1 THRU 3	XCEX 121808 N4
X1PB1-181-B1_	28.25	16.25	12.54	18.38	15.75	.63	2.5"	10.00	1 THRU 4	XCEX 122408 N4
X1PB1-241-B1_	28.25	16.25	12.54	18.38	15.75	.63	2.5"	16.00	1 THRU 4	XCEX 122408 N4
X1PB1-123-B1_	22.25	16.25	12.03	14.13	15.75	.50	2"	16.00	1 THRU 3	XCEX 121808 N4
X1PB1-183-B1_	28.25	16.25	12.54	18.38	15.75	.63	2.5"	16.00	1 THRU 4	XCEX 122408 N4
X1PB1-243-B1_	28.25	16.25	12.54	18.38	15.75	.63	2.5"	16.00	1 THRU 4	XCEX 122408 N4
X1PB2-123-B1_	22.25	16.25	12.03	14.13	15.75	.50	2"	7.00	1 THRU 3	XCEX 121808 N4
X1PB2-183-B1_	28.25	16.25	12.54	18.38	15.75	.63	2.5"	10.00	1 THRU 4	XCEX 122408 N4
X1PB2-243-B1_	28.25	16.25	12.54	18.38	15.75	.63	2.5"	16.00	1 THRU 4	XCEX 122408 N4

LIGHTING PANELS

Catalog #	# Branch Breakers	Eaton Cutler Hammer Pow-R-Line C Panelboards			Chassis Type
		Electrical Rating	Main Brkr Type	Buss Amp	
X1PB1-121-B1_	10	1Ø-3W 120/240V	BAB2100	100	PRL1A
X1PB1-181-B1_	16	1Ø-3W 120/240V	BAB2100	100	PRL1A
X1PB1-241-B2_	22	1Ø-3W 120/240V	BAB2100	100	PRL1A
X1PB1-123-B1_	9	1Ø-3W 120/208V	BAB3100H	100	PRL1A
X1PB1-183-B1_	15	1Ø-3W 120/208V	BAB3100H	100	PRL1A
X1PB1-243-B2_	21	3Ø-4W 120/208V	BAB3100H	100	PRL1A
X2PB2-123-B1_	9	3Ø-4W 120/480V	GHB3100	100	PRL2A
X2PB1-183-B1_	15	3Ø-4W 120/480V	GHB3100	100	PRL2A
X1PB2-243-B2_	21	3Ø-4W 120/480V	GHB3100	100	PRL2A

BRANCH CIRCUIT OPERATING HANDLES & PLUGS

Catalog #	DESCRIPTION
X1PB1-H1	SINGLE POLE PL1A BREAKER HANDLE
X1PB1-H2	TWO POLE PL1A BREAKER HANDLE
X1PB1-H3	THREE POLE PL1A BREAKER HANDLE
X1PB2-H	PL2A BREAKER HANDLE (ALL POLES)
X1PB1-HGL1	SINGLE POLE PL1A GFI/EPD BREAKER HANDLE - LEFT HAND
X1PB1-HGR1	SINGLE POLE PL1A GFI/EPD BREAKER HANDLE - RIGHT HAND
X1PB1-HGL2	TWO POLE PL1A GFI/EPD BREAKER HANDLE - LEFT HAND
X1PB1-HGR2	TWO POLE PL1A GFI/EPD BREAKER HANDLE - RIGHTHAND
15562-7	BRANCH SPACE PLUG

BRANCH BREAKERS

PRL1A	PRL2A
BAB	
QBGF	GHB
QBGFEP	

NOTES:

1. For Bottom Fed Model add suffix -B
2. For Top Fed Model add suffix -T
3. 10kA Maximum Interrupting Capacity (Sym.)