



**HAZARDOUS & GENERAL PURPOSE  
DESIGN, BUILD & FABRICATE**

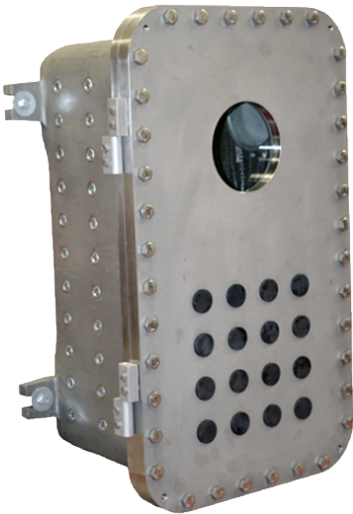
# HAZARDOUS LOCATION ENCLOSURES



## Cast Aluminum Junction Boxes & Control Enclosures

Explosion proof control enclosures and junction boxes are designed to house arcing/sparking devices in Division 1 rated areas. Rated NEMA 4/7/9 for UL and cUL Classified hazardous areas, are constructed from cast aluminum and is available in sizes ranging from 06" x 08" x 04" to 32" x 36" x 12".

- 64 standard sizes available
- One-piece NEMA 4 water tight gasket
- Premium, high strength steel cover bolts. Stainless steel bolts available for NEMA 4X applications
- Cast-on mounting lugs
- Pre-drilled for hinge kit and internal back panel
- Modifications such as drilled & tapped entries, custom machining, and window kits are available
- Additional certifications available
- ATEX, IECEx, Customs Union, KOSHA, etc.



## Cast Stainless Steel Control Enclosures

Some hazardous location applications require extra corrosion resistance. Stainless steel enclosures provide an alternative to traditional cast aluminum when extra corrosion resistance is required. The explosion proof enclosure series is UL/ cUL Classified and is constructed from 316L cast stainless steel and is available in sizes ranging from 08" x 10" x 06" to 24" x 36" x 10".

- 8 standard sizes available
- One-piece NEMA 4 watertight gasket
- Stainless steel cover bolts for NEMA 4X applications
- Cast-on mounting lugs
- Pre-drilled for hinge kit and internal back panel
- Modifications such as drilled & tapped entries, custom machining, and window kits are available
- Additional certifications available - ATEX, IECEx, Customs Union,

**As the largest stocking distributor of cast enclosures and controls in the United States, our on-hand inventory coupled with a wide array of value-added services allow us to offer fast project turnaround and quick ship capabilities.**



# ENCLOSURE FABRICATION

## Design & Build

From the back of a napkin or yellow scratch pad, designing a project begins with a need and then an idea, our goal is to help us bring that design to fruition. From PLC programming to hazardous location intrinsically safe assemblies we have helped our customers build projects from initial concept to final installation.



Our team provides you with the resources and the hands on expertise to meet your requirements and your budget. Contact us today to discuss your next project. Download our capabilities brochure to view a few of the projects we have undertaken.

We are committed to meeting your technical requirements schedule and budget. Our capabilities span from increased safety control panels to motor starters, circuit breaker assemblies, purge systems, PLC and GUI panels, and operator consoles.

We have served the electrical industry since 1969 and approach each project, from single panel enclosures to large scale custom electrical panels, with the same dedication to craftsmanship. We will build to your specifications from any CAD design or from your functional description.

Whether your application requires a NEMA 4, NEMA4X, NEMA12 or NEMA 7, we provide you with competitive pricing and high quality services to suit your needs.



## Low Voltage Motor Control

Specializing in large motor control, protection, configuration, design, system coordination, transient motor-starting analysis, troubleshooting and startup commissioning.

- Motor control center engineering, design and specification
- Startup commissioning service
- Strong background with LV/MV motor control, generator control and power distribution
- Switchgear design and startup

# HAZARDOUS LOCATION MOTOR STARTERS & CONTROL



## Hazardous Location Motor Control

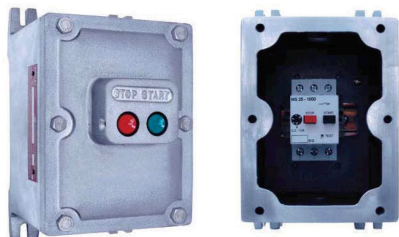
NEMA7.com provides populated motor control assemblies as standard products or custom assemblies per customer specifications. Full engineering services are available as well as complete integration with assembly and wiring.

- Non-reversing and reversing motor starters and combination motor starters
- UL/cUL Classified
- Circuit breakers and disconnects available from 15A through BODA
- Standard configurations include operating devices and drilled & tapped entries
- Utilizes standard explosion proof enclosures with standard features

## Hazardous Location Switchracks

Our vast selection of cast enclosures combined with our fabrication capabilities ensures a quick turn around on Hazardous Location Switchracks.

- Wide Variety of explosion proof motor control assemblies and panelboards.
- Rugged frame and canopy options provide heavy duty protection & construction.
- Single or double-sided assemblies available in single or double rows.
- Pre-drilled bus boxes provide ease of changes or additional components.
- Standard drawings of complete switchrack design provides detail on all enclosures, frame, canopy and wiring.



## Hazardous Location Manual Motor Starters

- Eaton type XTPB Manual Starter
- Nema 4X versions available
- Red and green pushbuttons for easy start/stop operation

## Hazardous Location Lighting & Power Distribution Panels

- Eaton chassis/copper bus with ground & isolated neutral bars
- Eaton bolt on magnetic breakers
- Spring loaded breaker handles
- Operating handles can be padlocked in "on" or "off" position.



## AUTOMATED MACHING AND FABRICATION CAPABILITIES



### CNC Horizontal Boring Mill

- Full automated CNC machining with treadmilling
- 360 degree rotating table
- Cast aluminum, stainless and other materials

### Custom Bus Bar Fabrication

- Shears and brakes
- Automatic saw
- Cu Buss up to ¼ x 4 inches

LEARN MORE AT  
[NEMA7.COM](http://NEMA7.COM)



# HAZARDOUS LOCATION ACCESSORIES



## NEMA 7 Fittings & Accessories

Standard Features of Flex Couplings

- Conduit sizes from 1/2" NPT through 1" NPT
- Lengths from 12" to 36", NEC limits lengths to 36"
- Two female-threaded end fittings with male nipples
- UL Listed for use in hazardous locations
- Corrosion resistant and watertight
- Perfect for tight spaces which require difficult bends



## Hazardous Operators & Push Buttons

- Momentary pushbuttons
- Rated for Class I, Groups B, C & D and Class II groups E, F & G
- Legend plates available
- Protective boots available
- Long and short shanks.
- BT series Contact Blocks.

# NON-HAZLO ASSEMBLY & PANEL SHOP



NEED A QUOTE? CONTACT US!

# ENGINEERING

Through a close partnership, we offer engineering and CAD services. In combination with our fabrication capabilities we can offer turn-key solutions for our customers needing Terminal -Load/Unload, Facility Engineering, Gas Processing, or Refinery upgrades.

CADWork 3D/2D provides intelligent drawing & database connectivity, with advanced levels of automation, links between CAD and pipe stress analysis which increases accuracy and improves the quality of deliverables.

Additional services included ARC Flash studies, lighting, coordination, SCADA, hydraulics, stress, surge, corrosion, process safety and as-build studies.



## Electrical Power Systems

- Comprehensive power systems services, analysis and design (we use SKM Power Tools@)
- NFPA-70E compliant arc flash analysis
- Motor controls design and field services, transient motor starting analysis for large motors
- Overcurrent protection and protective relay settings development
- Solar-powered applications large and small

## Electrical Design

- Electrical and electronic engineering and design services
- Electrical design for LV & MV MCCs and switchgear
- Complete control panel design and fabrication services
- Power and control pulling design and fab
- Project management and vendor interfacing
- CAD services

## Field Service & Startup Support

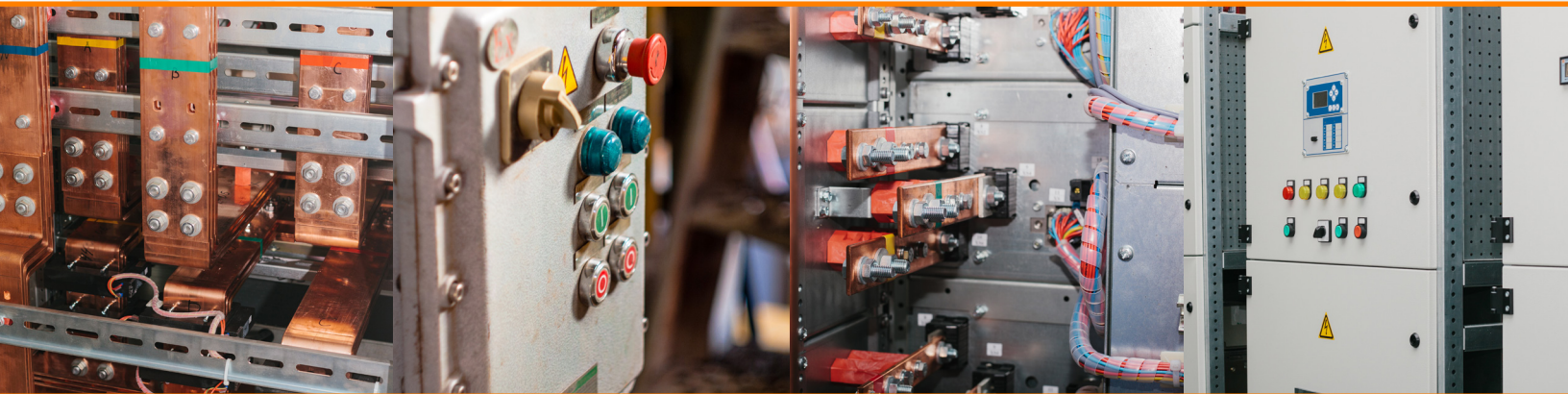
- Power and control systems
- Troubleshooting complex problems involving power and control systems
- Large motor controls, RSS, VFD, and MCCs
- Startups for LV & MV switchgear and associated protective relays
- Member ISNetworld

## Printed Circuit Board Design

- Prototype design, development, testing
- Production management services
- Schematics, layouts, Gerber files
- Firmware development

## Network Systems

- Terrestrial and wireless network design
- TCP/IP networks
- ISM band wireless mesh networks for control systems



As the largest stocking distributor of Adalet enclosures and controls in the United States, our on-hand inventory coupled with a wide array of value-added services allow us to offer fast project turn-around and quick ship capabilities.

Nema7.com | 4237 S. 74th East Ave Tulsa, OK 74145 | (918) 665-6888